

# Liquid Dispense

## Simple, Disposable, Time Pressure Dispensing

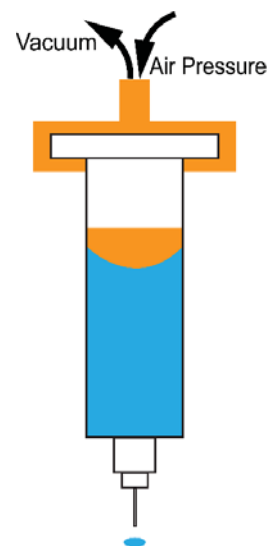
Time pressure is a **versatile method of dispensing that functions across a wide range of viscosities**. This dispense method works by applying pressure to the syringe. This pressure pulse is controlled by the software and can be used to dispense either lines, fills, or dots. With an appropriate fluid and nozzle configuration, **very fine and repeatable dots and lines can be dispensed**.

**This is a great addition to fully automatic systems.**

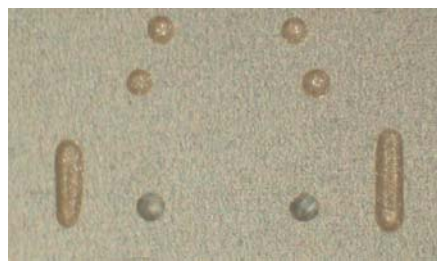
The amount of pressure is automatically controlled through the software. The amount of pressure is determined by a relationship between the material being dispensed and the application flow rate. When dispensing is finished, an adjustable vacuum is applied to the syringe that prevents material from dripping. The vacuum is adjustable to avoid pulling air into the needle.



Time Pressure with 10 cc Syringe



Operation Diagram



Structural and electrical conductive adhesives.  
Dots at 0.011" (0.27 mm).

Syringe sizes from 5 cc to 30 cc may be used with the included syringe kit. An optional level detect is available - it will notify the operator when the material level gets low.

Cleanup using this method is very simple. Because material is being dispensed directly from the syringe, the operator may dispose of it after it is empty. Additionally, the needles that are commonly used are disposable Luer-Lok® type. An operator may change a syringe and needle, and re-calibrate the system within a matter of two (2) minutes. Again, no cleaning is required as all wetted parts are disposable.

The Liquid Dispense option prevents material drool when the valve is not actively dispensing by maintaining a proper level of vacuum to the syringe. Control of the vacuum applied to the Liquid Dispense option during times when the syringe is not dispensing becomes especially useful when using **low viscosity materials**.

### Specifications

- Syringe Compatibility . . . . . EFD or Semco: 5 cc, 10 cc, 30 cc
- Dispense Tips . . . . . GPD S Type Luer or other Luer nozzles
- Viscosity Range . . . . . 1 to 100,000+ cps. Consult GPD for details.
- Pressure Range . . . . . 1 to 80 psi
- Minimum Pulse Time . . . . . 0.030 s