

SYSTEM INTRODUCTION

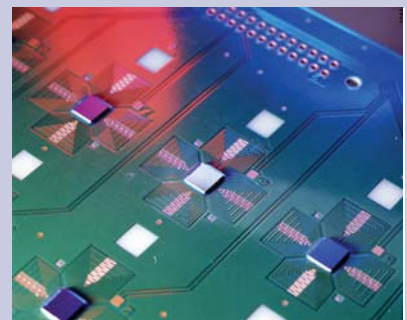
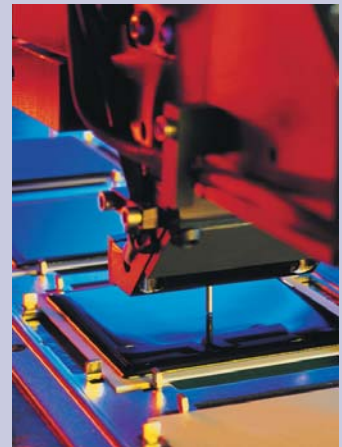
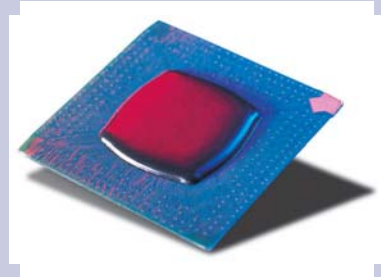
- Compact Footprint
- Unibody Frame
- Functional Workarea
12" x 12" (305 mm x 305 mm)
- Heat Capability
- 2 Valve/Tool Capability
- Up To 38,000 Dots / Hour
- Accuracy of ± 0.001 " (0.025 mm)
- Linear Speed of 30"/sec (762 mm/sec)

The **GPD Global® MicroMax® II** is a compact, high accuracy dispense system that gives you the added flexibility of heat for your process. The frame is "liquid rock" which gives the system a thermally stable platform for accurate and repeatable positioning.

The MicroMax II platform from GPD Global incorporates all of the exceptional performance benefits of the MicroMax® with the additional capability of adding heat to your process. Heat is required in many processes to assist in material flow and to eliminate trapped air pockets. The MicroMax II is configurable with multiple heat zones allowing you to sculpt your process.

Heat is available in the following areas: Pre-Post Heat, Work-Area, and at the Material and Needle. Maximum temperature for the substrate is 150° C while the material and needle may be heated to 70° C and 90° C respectively.

The MicroMax® Series incorporates many innovative features making the system easy to use and operator friendly. Some key features are: Automatic X, Y, Z calibration (no operator intervention required), needle cleaner, computer controlled syringe air pressure, Contour Mapping™, FLOWare® operating software and multi valve capability.



Standard Features

- Automatic Vision
- Red/Blue Illuminator
- Needle Cleaner
- Auto X, Y, Z Calibration
- 2 Valve Capability
- Tool-less Taper-Lock™ Mounting Hardware
- Heat and Vacuum Control Module
- Computer Controlled Syringe Pressure
- FLOWare® Operating Software
- Network Communications

Power

MicroMax® II SA, MicroMax® II IL

230 Volts AC frequency 50-60 Hz
 20 amps @ 230 Volts

GPD Global recommends use of dedicated, external circuit breaker/fusing. Alternately, use properly rated branch fusing.

Air

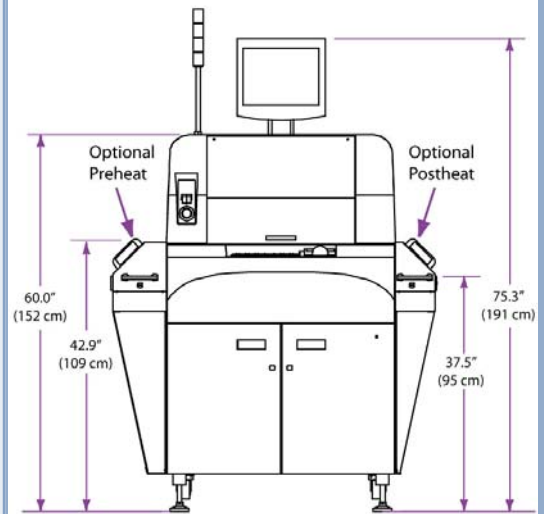
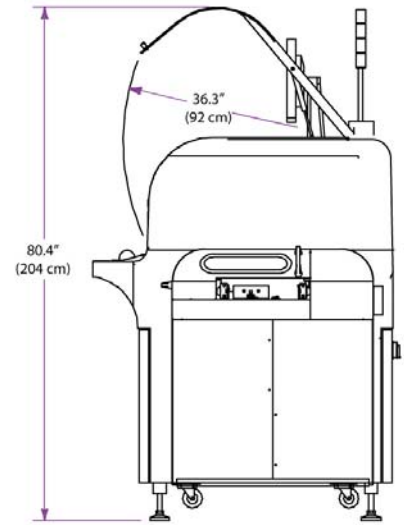
- Pressure (clean dry air) 80 psi (552 kPa)
- Flow rate (maximum) - add flow for each vacuum system present:
 - machine 4 CFM @ 87 psi (113 l/min @ 600 kPa)
 - nest vacuum 4 CFM @ 50 psi (113 l/min @ 345 kPa)
 - optional preheat vacuum 4 CFM @ 50 psi (113 l/min @ 345 kPa)
 - optional postheat vacuum. 4 CFM @ 50 psi (113 l/min @ 345 kPa)
- Air fitting thread* 1/4" NPT
- *customer supplies connection hardware

Ventilation

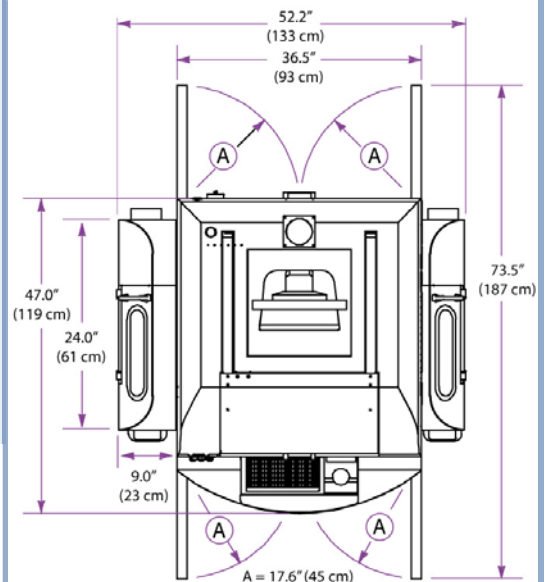
- Exhaust ports*, up to 3 4" (101.6 mm)
- *customer supplies ducting to exhaust ports; the number of ports is configuration dependent (pre-heat, nest, post-heat)
- Ventilation flow rate 250 CFM (7,079 l/min) per port

Crating Specifications

- Weight, crated 2100 lbs (953 kg)
- Dimensions, crated 51"W x 63"D x 72"H to 70"W x 63"D x 72"H
- 130cm W x 160 cm D x 183 cm to 178cm W x 160 cm D x 183 cm H



All vertical dimensions can be adjusted (together) +/- 1.00" (+/- 2.54 cm).



Standard direction of flow is Left-to-Right, however, Right-to-Left is configurable at time of order.



Headquarters

611 Hollingsworth Street, Grand Junction, CO 81505
 tel: +1.970.245.0408 • fax: +1.970.245.9674 • request@gpd-global.com • www.gpd-global.com Rev Apr 2009