

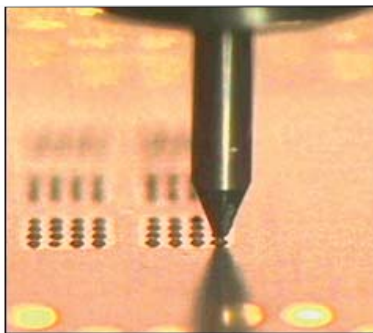
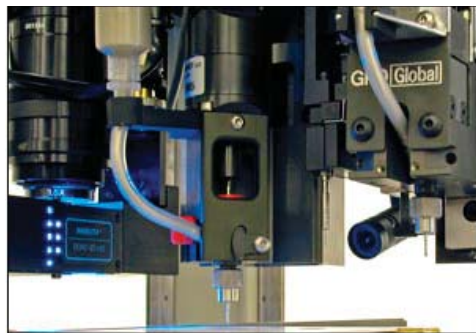
Process View Camera

View & Display Your Process LIVE!

GPD Global®'s exclusive **Process View Camera** allows you to view your process live and display it on a large, process view monitor. The Process View camera is especially useful when dispensing on today's shrinking components and other products requiring **micro volume dispensing**.

The color Process View camera is mounted behind the dispense station and focused at the dispense tip. When multiple dispense stations are used, the camera can shift between positions for continued process monitoring. Illumination is provided by adjustable LED lighting that is mounted with the camera.

To view the color image, a Process View Monitor is mounted to the side of the GPD Global® dispense system for easy viewing at the machine or from across the room. Process View Cameras are compatible with inline or stand-alone configurations.



MAX Series with
Process View Monitor

When used with DS Series systems, all three dispense stations can be viewed through the toggling camera.

Alternatively, the process image can be ported to the rear of the system to allow the user to define their monitor placement. Moving and still process images may be captured with optional USB video capture for process tracking and presentation purposes.

Operators can now monitor long-running processes from across the room. Imagine the time and resources saved by real-time video of your dispense process allowing for instant adjustments as required without having to remove the substrate for inspection.

Couple this inspection method with our gantry mapping process - Contour Mapping™ - which is performed on all GPD Global® dispensers, and our high-resolution, encoded drive motors, and it is easy to see why GPD Global® is a leader in high precision, high accuracy dispensing systems.