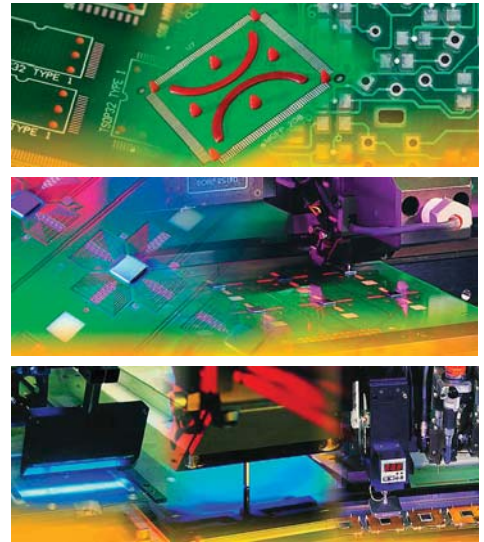


LX Auger Valve

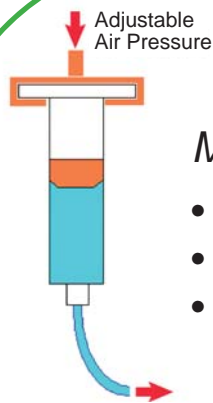
Accurate & Repeatable Dispensing for Many Material Types

LX Auger Valve for your general paste and adhesive needs:

- SMT Adhesives
- Epoxies
- Solder Pastes
- Plus many more...



DISPENSE METHOD



Material fed to Auger via Pressure to Material Reservoir

- Material *is not* dispensed by air pressure.
- Air pressure only feeds material to the auger and cartridge.
- Air pressure may be constant or cycled depending on application.

Shot size controlled via software

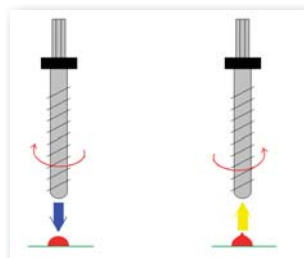
- Able to dispense lines, fills, arcs, or dots
- Also dispense while moving in Z-axis to fill cavity



Dam and Fill



SMT Adhesive



Forward and Reverse Auger Motion

- Reduces pressure build-up in needle
- Controls stringing of some materials
- Key for repeatable dispense



Various auger and speed configurations available for precise process control

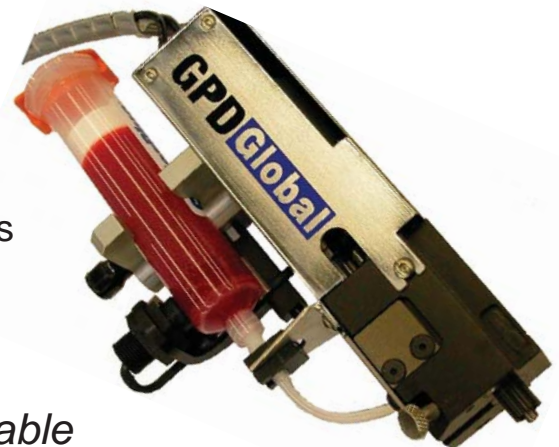
- Manufactured from Carbide
- Shallow to Deep groove configurations
- Two diameters available depending on flow rate
- Low friction bearing collar surface
- Motor speed control from within software

Many needle sizes and types are available for specific dispense requirements



Syringe Level Detect

- Capacitive Sensor
- Can be fine tuned for all materials
- Works with clear or dark material reservoirs
- Mechanical adjustment for level control



Heated Applications Options also available

- Calibration Scale
- Needle Heater
- Syringe Heater

Calibration Scale



Needle Heater



10/30 cc Syringe Heater

