

CF-9
Radial Lead Forming Machine

**Bills of Material
&
Exploded Views**

Version 2.1.1
May 21, 2007

Prepared by
GPD Documentation Department

Copyright (C) 1992, 1996, 2002, 2007 GPD Global®
All Rights Reserved

GPD Global®
611 Hollingsworth Street
Grand Junction, CO 81502
(970) 245-0408 FAX (970) 245-9674

Table of Contents

<u>Description</u>	<u>Drawing No.</u>	<u>Page</u>
CF-9 General Parts	CF-9 General Assembly	1
	(1 of 7)	5
	(2 of 7)	6
	(3 of 7)	7
	(4 of 7)	8
	(5 of 7)	9
	(6 of 7)	10
	(7 of 7)	11
Die Block Station #1	901-1-100	12
Cover Plate Assembly	901-1-101	14
Die Block Station #2	901-1-102	16
Transfer Belt Assembly- Large stud size	901-3-101	18
Transfer Belt Assembly- Small stud size	901-3-102	18
Cam Follower Assembly	902-1-102	20
Lever Assembly - Belt	902-1-103	22
Lever Assembly - Top	903-1-104	24
Lever Assembly - Bottom	903-1-105	26
Infeed Arm Assembly with Spring	903-2-110	28
Counter Bracket	903-108	30
Control Unit, 120V 60Hz	906-3-1	32
Control Unit, 230V 50/60Hz	906-3-2	34
Spare Parts Kit, 120V	925-1-2	36
Spare Parts Kit, 230V	925-1-3	38
Micrometer Adjustment Package	925-111	40
Counter Package, 120V	925-112	42
Counter Package, 230V	925-113	44

10-30-92 **Bill of Material for Assembly CF9.GENERAL**
CF9 GENERAL PARTS

Effective As of: 10-15-92

ITEM*	PART#.....	DESCRIPTION.....	QTY.....	UM
1	901-2-6A	SHAFT ECCENTRIC	1	EA
2	901-2-6B	SHAFT ECCENTRIC	2	EA
3	901-2-7	GEAR	2	EA
4	901-2-8	IDLER GEAR	2	EA
5	901-2-9	IDLER SHAFT	2	EA
6	901-2-10	CAM	1	EA
7	901-2-11	SHAFT ECCENTRIC	1	EA
8	901-2-13	GEAR	2	EA
9	901-2-19	SLIDE ROD	4	EA
10	901-3-4	PULLEY, CAM FOLLOW	1	EA
11	901-3-5	PULLEY, MOTOR	1	EA
12	902-1-2	TIE BAR	4	EA
13	902-1-7	SHAFT	1	EA
14	902-1-8	GEAR	1	EA
15	902-1-13	WASHER STEEL	4	EA
16	902-1-18	PULLEY NYLATRON	2	EA
17	902-1-12	SHAFT	1	EA
18	902-1-14	PULLEY	1	EA
19	902-1-15	SHAFT	1	EA
20	902-1-16	GEAR	1	EA
21	902-1-17A	BRASS WASHER	4	EA
22	902-2-1	UPRIGHT	1	EA
23	902-3-3	REAR SUPPORT PLATE	1	EA
24	902-4-9	BASE	1	EA
25	903-1-4	BELT GUIDE	1	EA
26	903-1-5	SUPPORT PIN	2	EA
27	903-1-8	PRESSURE PLATE	1	EA
28	903-1-12	WASHER NYLATRON	4	EA
29	903-1-13	PIN	1	EA
30	904-1-1	CABINET	1	EA
31	904-2-2	TAPE EXIT CHUTE	1	EA
32	904-2-3	COMPONENT EXIT CHUTE	1	EA
33	904-2-4	SPACER	2	EA
34	904-2-5	SHIELD LOCKING BLOCK	1	EA
35	904-2-6	BELT GUARD	1	EA
36	904-3-7	SHIELD.SAFETY GUARD	1	EA
37	SACAN2520037	SCREW,ALLEN,CAP	AR	EA
38	SACAN2520062	SCREW,ALLEN,CAP	AR	EA
39	SACAN2520125	SCREW,ALLEN,CAP	AR	EA
40	SACAN2520050	SCREW,ALLEN,CAP	AR	EA
41	SABAN1032037	SCREW,ALLEN,BUTTON	AR	EA
42	SACAN1032087	SCREW,ALLEN,CAP	AR	EA
43	N.S.			
44	NSNA1032	NUT	AR	EA
45	NK-250	KNOB NEURAL	1	EA
46	HG-210	HINGE, SAFETY GUARD	2	EA
47	F4959	SHOULDER BOLT	1	EA
48	G1007	RETAINING RING 5100-25	AR	EA
49	G1003	RETAINING RING 5100-18	AR	EA
50	903-1-OE	SPRING MUSIC WIRE	1	EA
51	B0001	RADIAL BALL BRG,	12	EA
52	D0001	MOTOR BELT	1	EA

N.S. - Not Shown

N.S.S. - Not Sold Separately

10-30-92 Bill of Material for Assembly CF9.GENERAL
CF9 GENERAL PARTS

Effective As of: 10-15-92

ITEM*	PART#.....	DESCRIPTION.....	QTY.....	UM
53	L0202	BUSHING 03DU04	4	EA
54	L0301	BUSHING 04DU04	3	EA
55	L0302	BUSHING 04DU06	1	EA
56	L0705	BUSHING 08DU12	2	EA
57	2800-0017	RUBBER GROMMET 5/8" ID	1	EA
58	902-4-9B	MOTOR RISER	2	EA
59	SABAN0832025	SCREW,ALLEN,BUTTON	AR	EA
60	SAFAN2520125	SCREW,ALLEN,FLATHEAD	AR	EA
61	4500-0008	RELAY SOCKET	1	EA
62	907-GROMMET	GROMMET	1	EA
63	904-4-1	REEL HOLDER	1	EA
64	SACAN2520087	SCREW,ALLEN,CAP	AR	EA
65	SABAN2520062	SCREW,ALLEN,BUTTON	AR	EA
	903-1-104	LEVER ASSEMBLY (TOP)	1	EA
	903-1-105	LEVER ASSEMBLY (BOTTOM)	1	EA
	920-109	REEL SPINDLE ASSEMBLY	1	EA
N.S.	SABAN0632025	SCREW,ALLEN,BUTTON	AR	EA
N.S.	G3013	WOODRUFF KEY 605	AR	EA
N.S.	G3009	WOODRUFF KEY 404	AR	EA
N.S.	F3551	FLAT WASHER #8	AR	EA
N.S.	SABAN0832025	SCREW,ALLEN,BUTTON	AR	EA
N.S.	SACAN2520175	SCREW,ALLEN,CAP	AR	EA
N.S.	NACAN2520050	SET.A.CU.STL.	AR	EA
N.S.	TACAN0832018	SET.A.CU.STL.	AR	EA
N.S.	TACAN1032050	SET.A.CU.STL.	AR	EA
N.S.	SACAN1032062	SCREW,ALLEN,CAP	AR	EA
N.S.	SPRSN0632025	SCR.P.RD.SST.	1	EA
N.S.	NSIA3118	NUT,NYLON INSERT	AR	EA
N.S.	SHHAN3716075	SCR.H.HX.STL.	AR	EA
N.S.	F5953	HELICOIL	2	EA
N.S.	6000-20-HU-BRN	WIRE, 20AWG HOOKUP/BROWN	AR	IN
N.S.	6000-20-HU-RED	WIRE, 20AWG HOOKUP/RED	AR	IN
N.S.	6000-20-HU-BLU	WIRE, 20AWG HOOKUP/BLU	AR	IN
N.S.	6000-20-HU-WHT	WIRE, 20AWG HOOKUP/WHITE	AR	IN
N.S.	6000-20-HU-BLK	WIRE, 20AWG HOOKUP/BLACK	AR	IN
N.S.	2100-0123	CONNECTOR,TERMINAL	AR	EA
N.S.	2800-0029	STICK DOWN PADS 1/2"	3	EA
N.S.	TAPAN0832037	SET.A.PT.STL.	AR	EA
N.S.	810-4-3	MICROSWITCH BRACKET	1	EA
N.S.	NSNA0632	NUT	AR	EA
N.S.	F3102	LOCK WASHER INTERNAL #6	AR	EA
N.S.	SACAN0632100	SCREW,ALLEN,CAP	AR	EA
N.S.	SACAN0632037	SCREW,ALLEN,CAP	AR	EA
N.S.	920-SPC-2	SPACER .075	6	EA
N.S.	920-SPC	SPACER .050	6	EA

N.S. - Not Shown

N.S.S. - Not Sold Separately

10-30-92 **Bill of Material for Assembly CF9.GENERAL**
CF9 GENERAL PARTS

Effective As of: 10-15-92

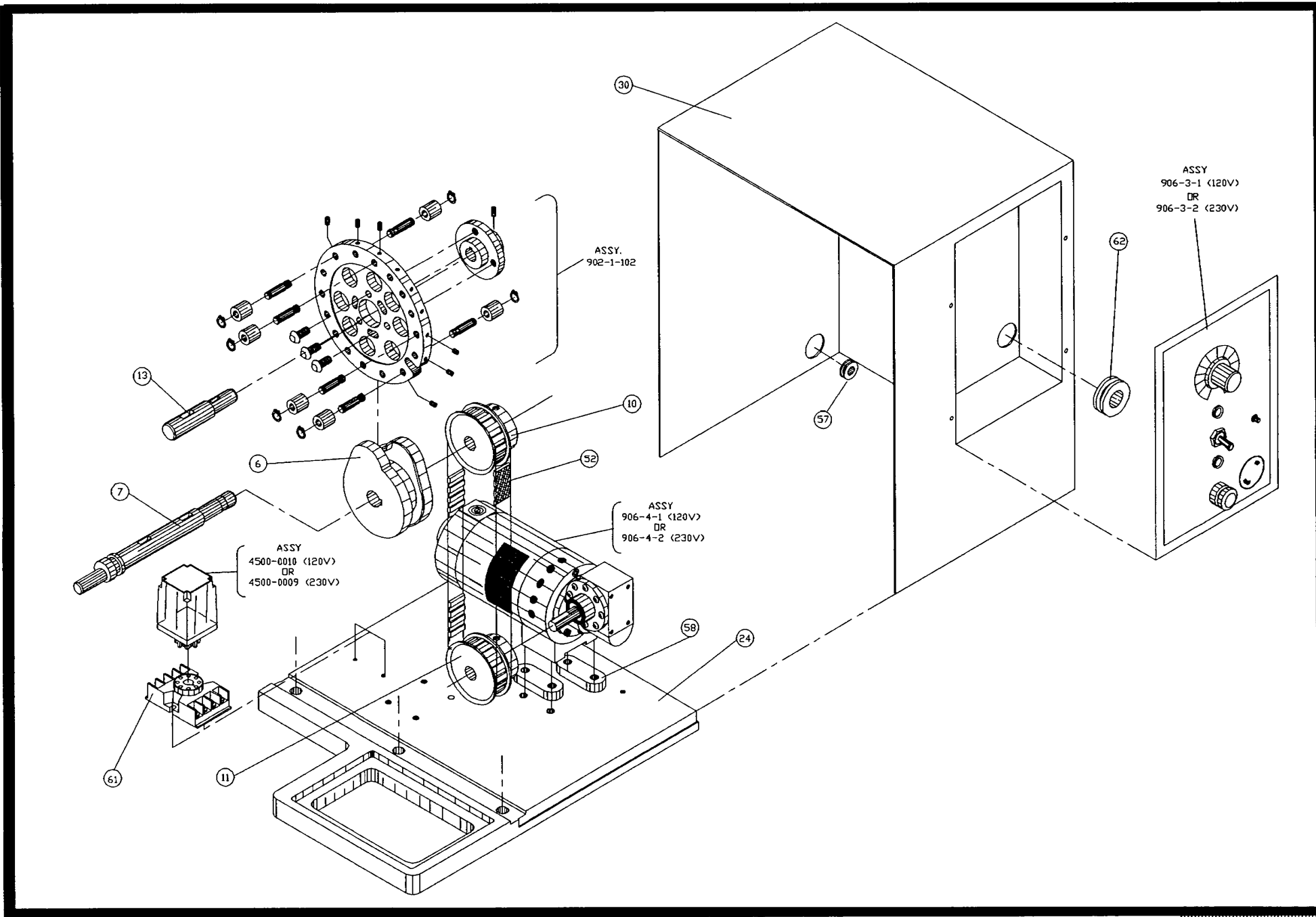
ITEM*	PART#.....	DESCRIPTION.....	QTY.....	UM
N.S.	SAFAN2520125	SCREW,ALLEN,FLATHEAD	AR	EA
N.S.	SABAN1032050	SCREW,ALLEN,BUTTON	AR	EA
N.S.	F2051	WASHER FLAT #4	AR	EA
N.S.	SACAN0440025	SCREW,ALLEN,CAP	AR	EA
N.S.	F3051	FLAT WASHER	AR	EA
N.S.	2100-0143	CONNECTOR,TERMINAL	AR	EA
N.S.	2800-0028	WIRE TIES	6	EA
N.S.	5100-0028	SWITCH,LIMIT	1	EA
N.S.	F5451	SHOULDER SCREW	1	EA
N.S.	901-1-01	MANUAL,CF9,OPERATING	1	EA
N.S.	701-EA	COMPONENT BIN ANTISTATIC	1	EA
N.S.	2400-0012	DATA PLATE, ELECTRICAL	1	EA

TOOL KIT

N.S.	709-7	WRENCH 5/32 "T"	1	EA
N.S.	709-5	WRENCH 3/16 "T"	1	EA
N.S.	709-10	WRENCH 3/32 ALLEN	1	EA
N.S.	709-9	WRENCH 7/64 ALLEN	2	EA
N.S.	950-001	SLIDE GAP	1	EA
N.S.	10/0236	SPACER, CF-9 REEL	1	EA
N.S.	905-00	CATALOG,DIE,CF-9	1	EA

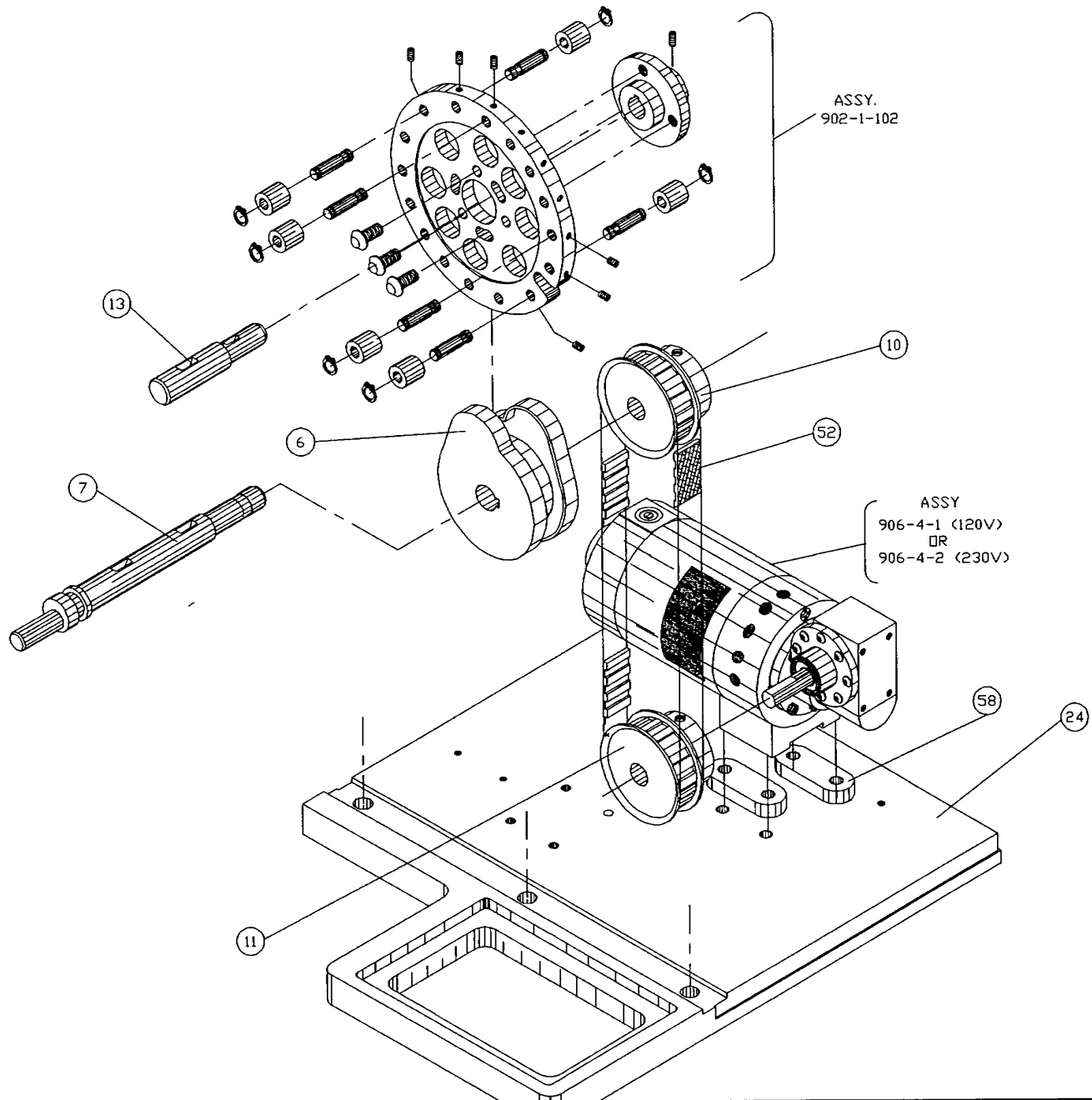
N.S. - Not Shown

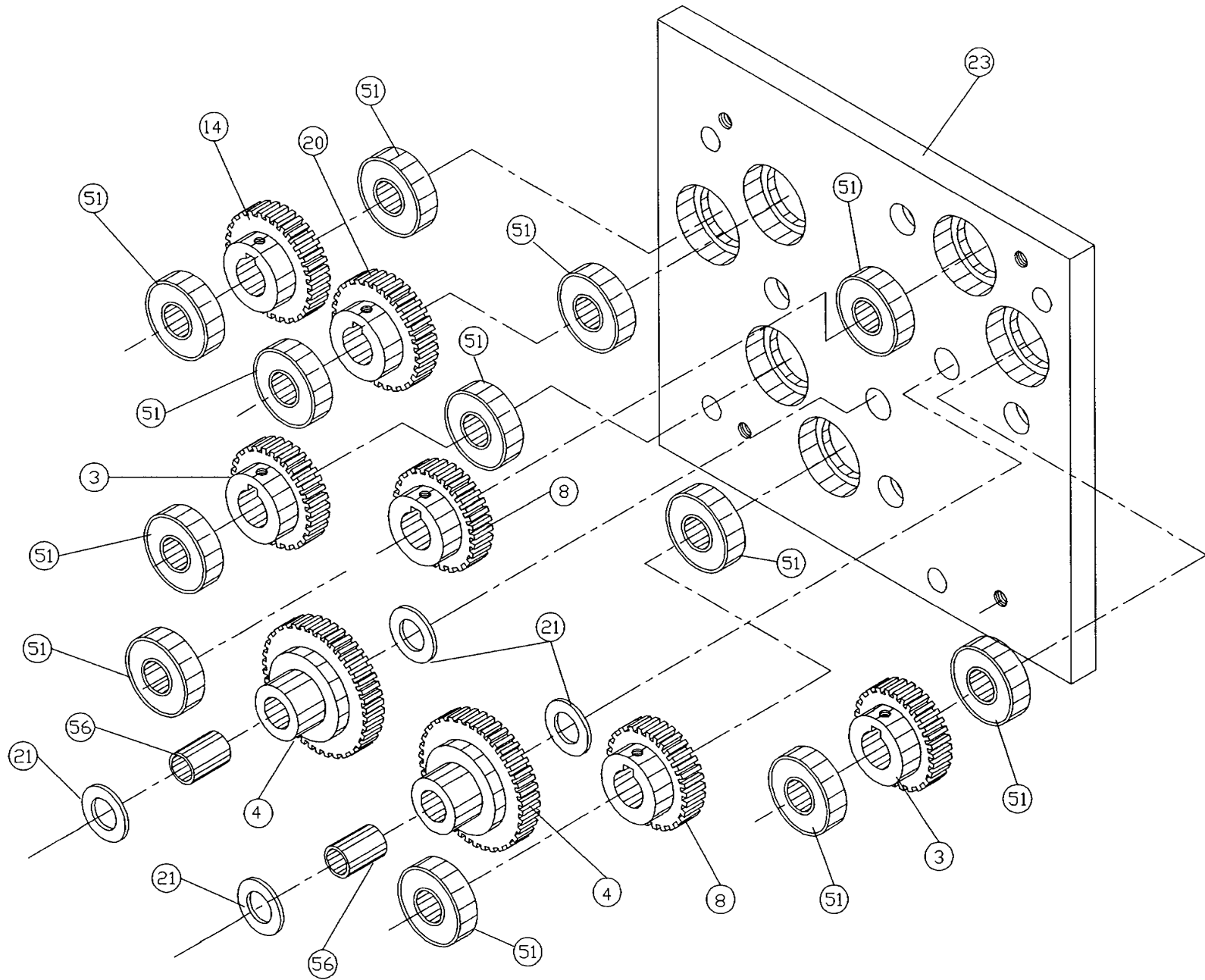
N.S.S. - Not Sold Separately

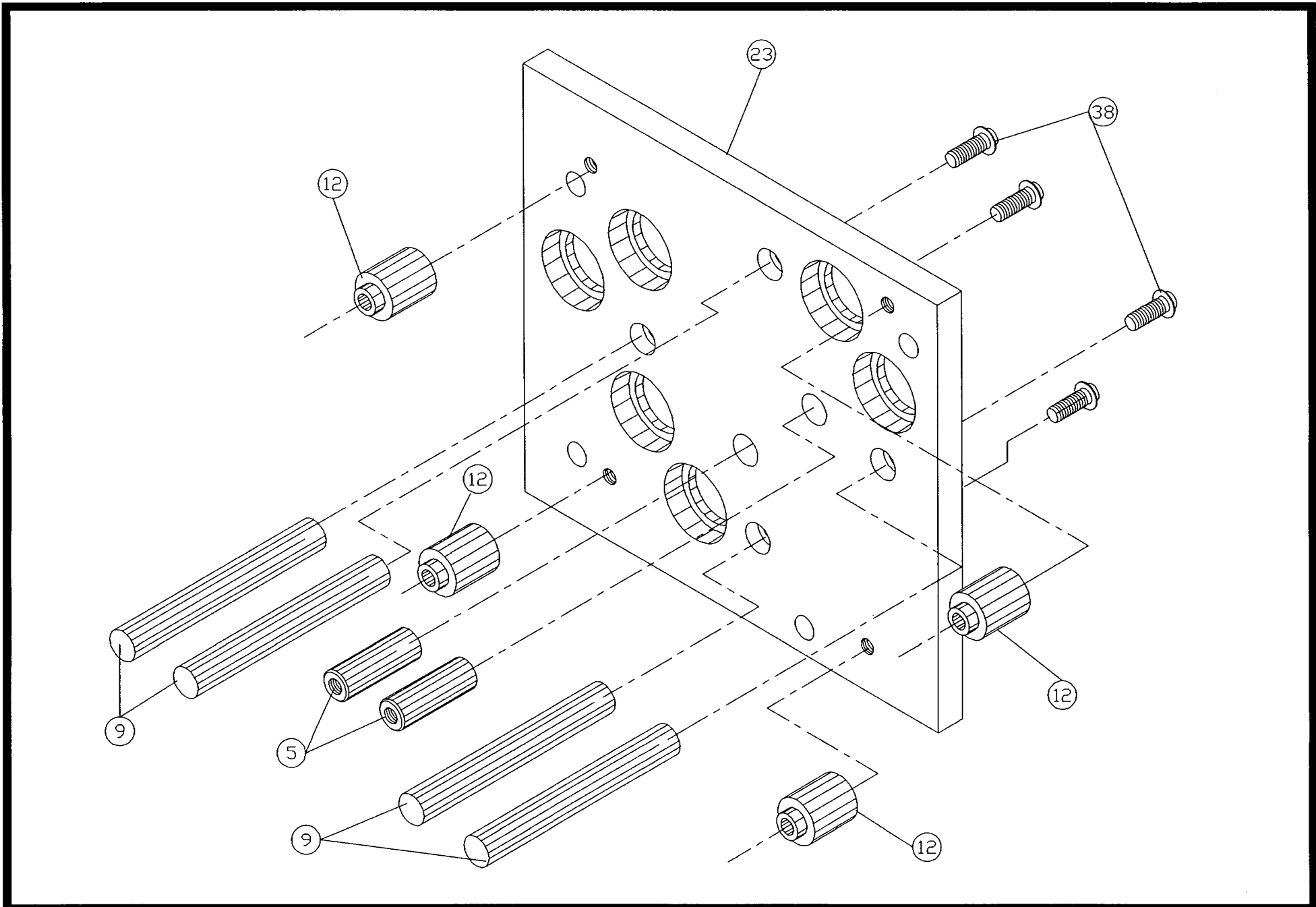


CF-9 General Assembly (1 of 7)



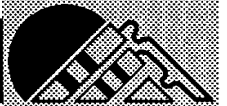


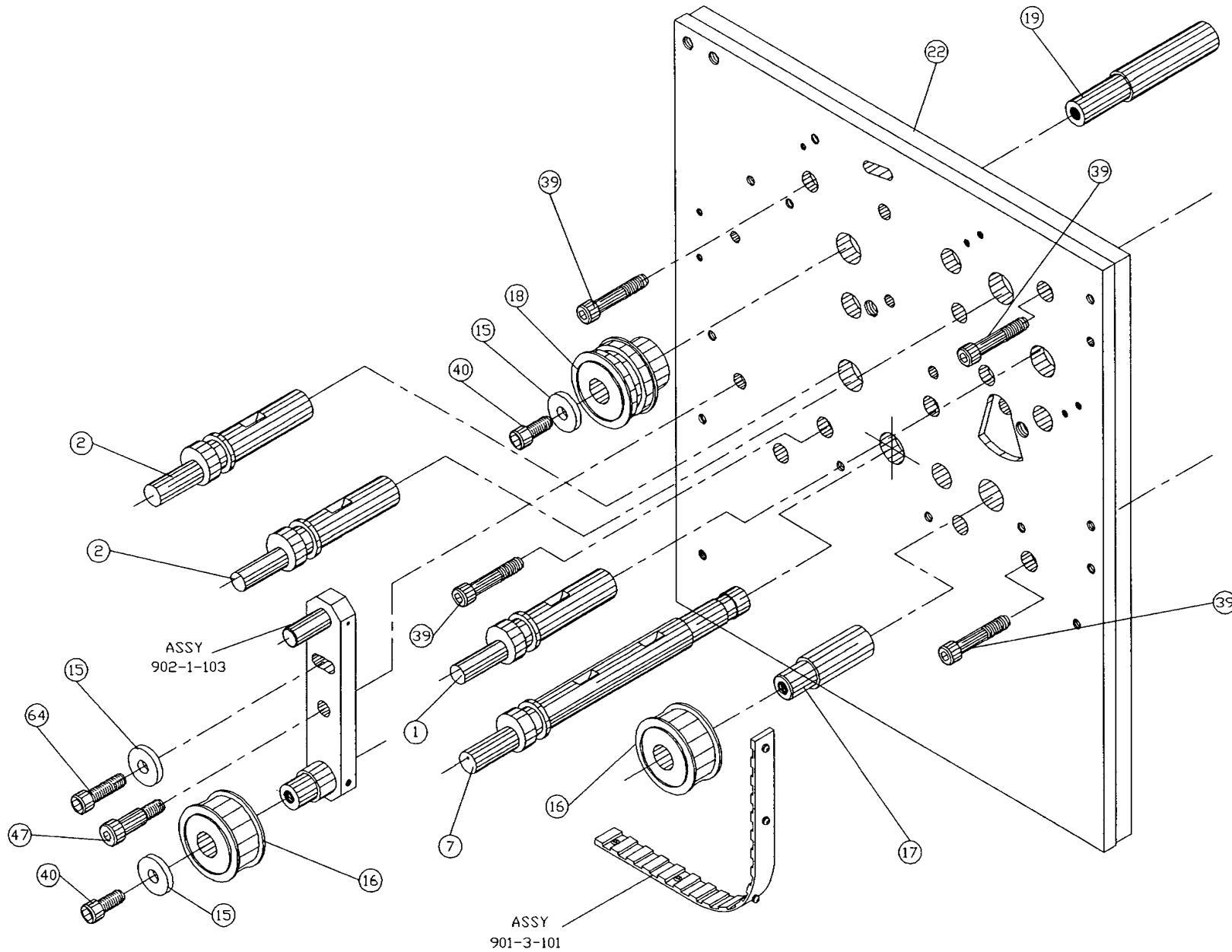


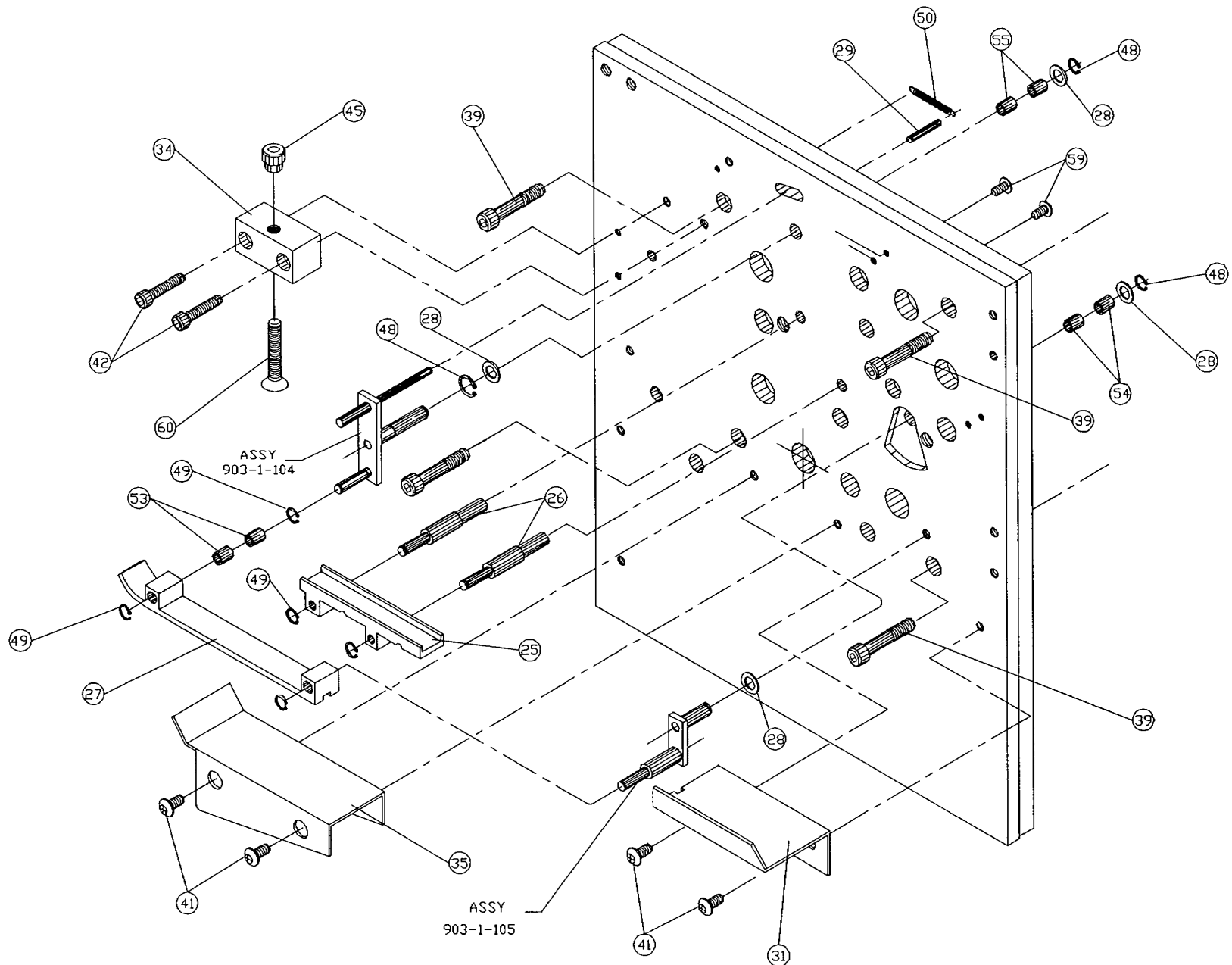


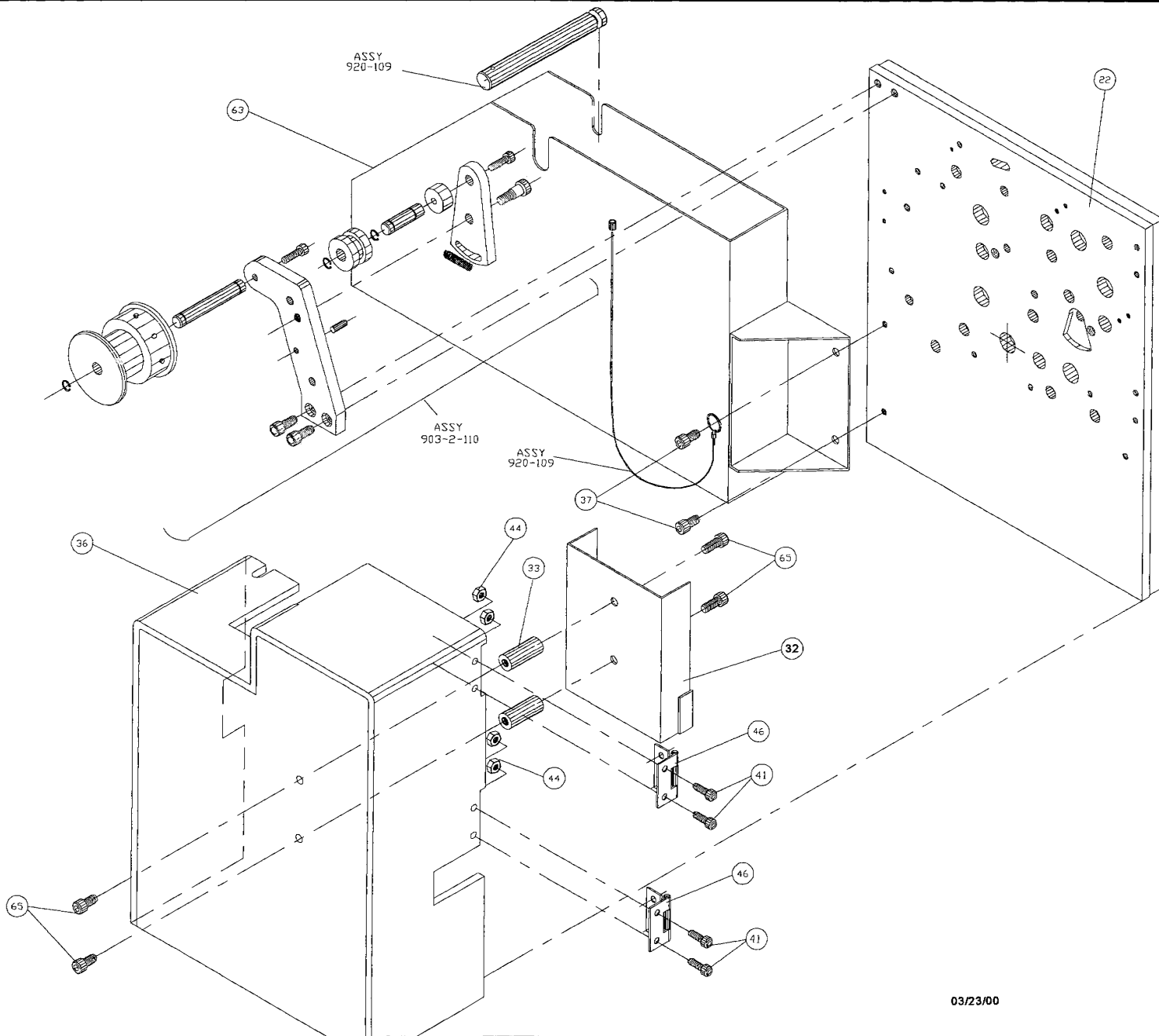
GPD

CF-9 General Assembly (4 of 7)

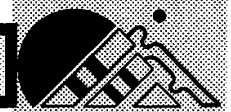








03/23/00



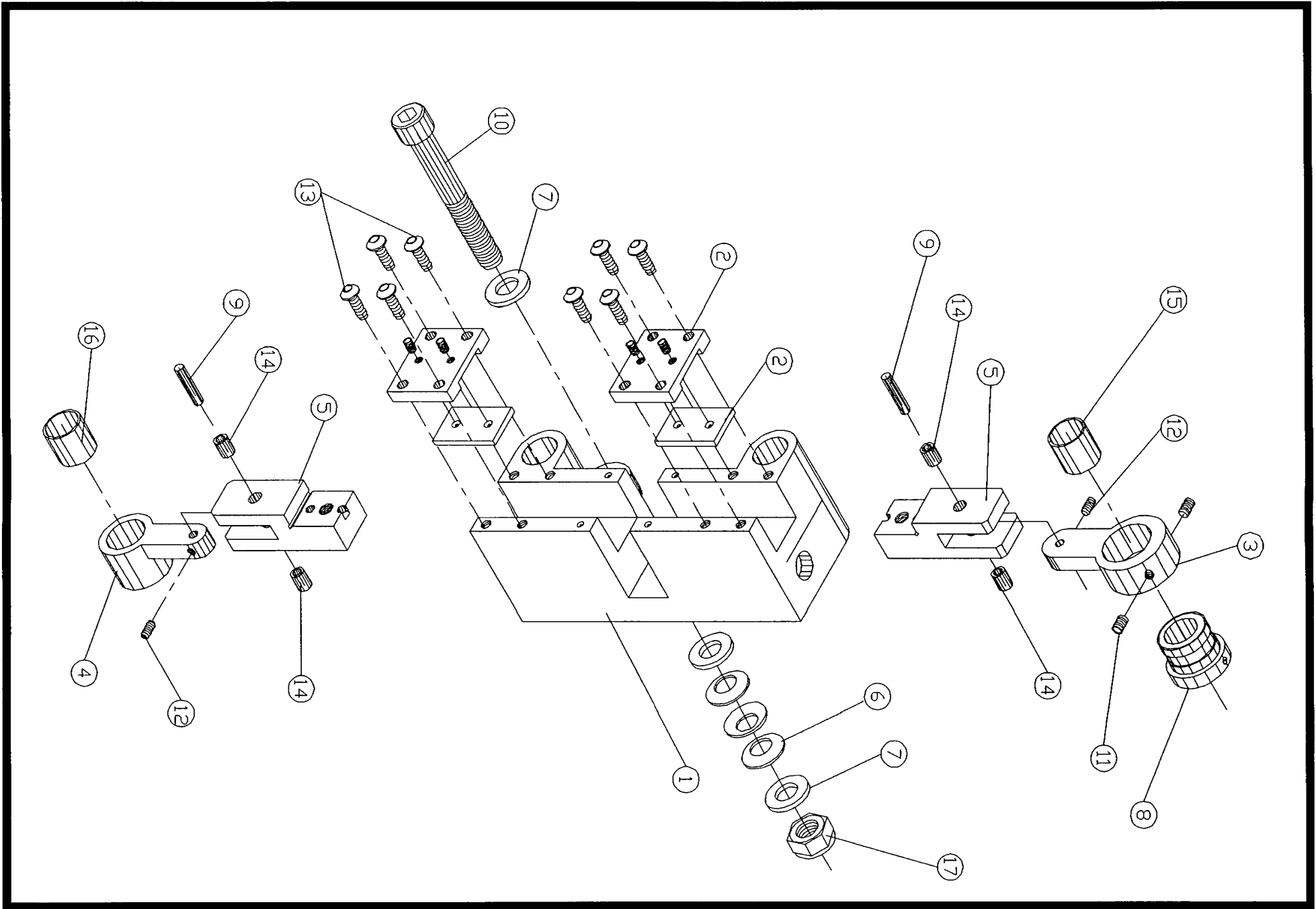
10-30-92 Bill of Material for Assembly 901-1-100
DIE BLOCK STATION #1

Effective As of: 10-15-92

ITEM*	PART#.....	DESCRIPTION.....	QTY.....	UM
1	901-1-1	DIE BLOCK	1	EA
2	901-1-101	COVER PLATE ASSEMBLY	2	EA
3	901-3-1	LARGE CRANK	1	EA
4	901-1-4	SMALL CRANK	1	EA
5	901-2-14	SLIDE	2	EA
6	10/0197	WASHER,BOW,SS	3	EA
7	901-3-7	WASHER STEEL	3	EA
8	901-3-2	ECCENTRIC BUSHING .015	1	EA
9	801-1-12	CRANK PIN	2	EA
10	901-1-5	SCREW,ADJ	1	EA
11	TACAN0832018	SET.A.CU.STL.	AR	EA
12	TACAN0440018	SET.A.CU.STL.	AR	EA
13	SACAN0632037	SCREW,ALLEN,CAP	AR	EA
14	L0001	BUSHING 02DU03	4	EA
15	L0503	BUSHING 06DU10	1	EA
16	L0601	BUSHING 07DU08	1	EA
17	NSIA3118	NUT, NYLON INSERT_5/16-18	1	EA
N.S.	801-1-20	SCR,WASH FACE TH'B	1	EA

N.S. - Not Shown

N.S.S. - Not Sold Separately



GPD

Die Block Station #1 No. 901-1-100



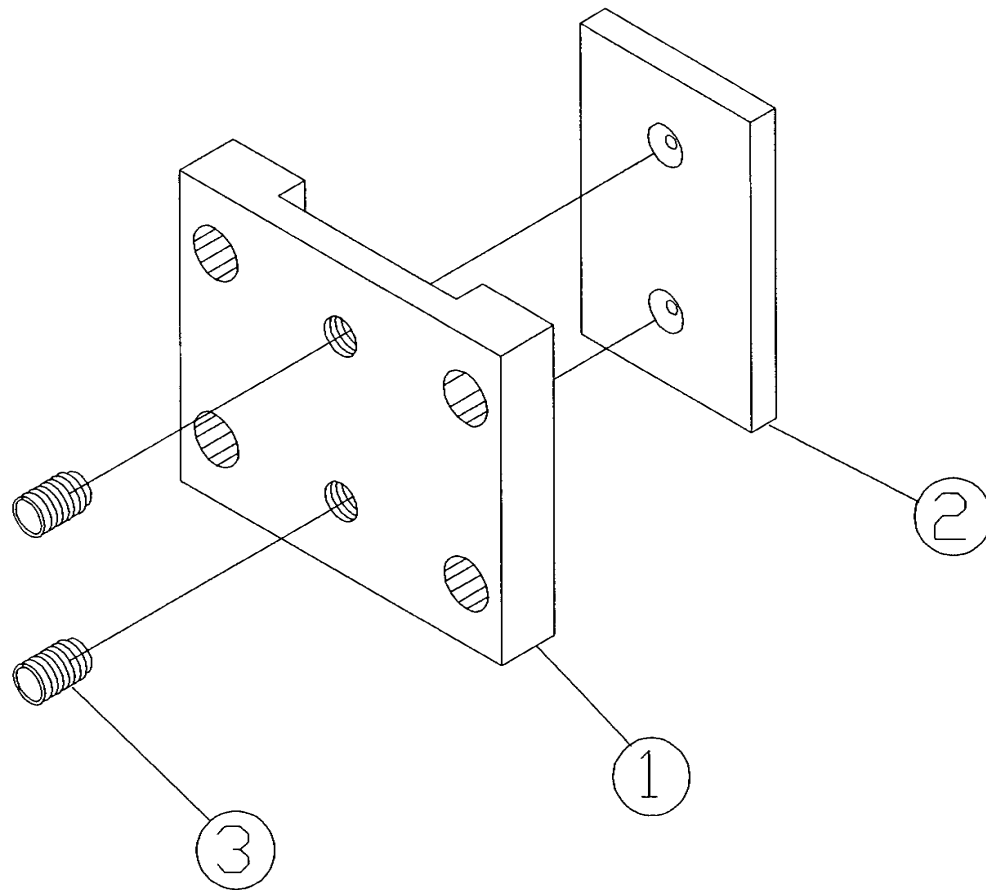
10-30-92 Bill of Material for Assembly 901-1-101
COVER PLATE ASSEMBLY

Effective As of: 10-15-92

ITEM*	PART#.....	DESCRIPTION.....	QTY.....	UM
1	901-1-3	COVER PLATE	1	EA
2	901-1-6	WEAR PLATE	1	EA
3	TACAN0440012	SET.A.CU.STL.	2	EA

N.S. - Not Shown

N.S.S. - Not Sold Separately



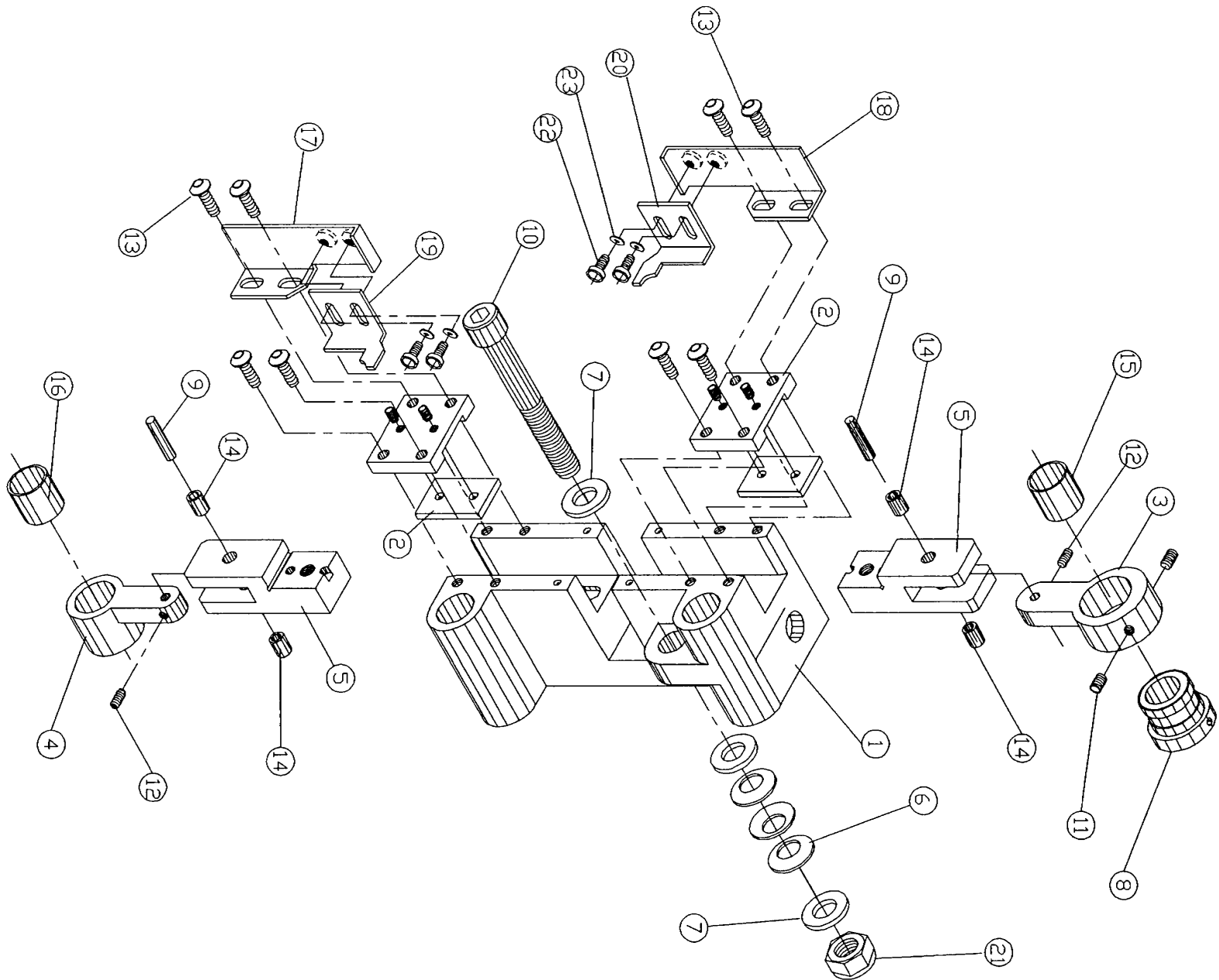
10-30-92 Bill of Material for Assembly 901-1-102
DIE BLOCK STATION #2

Effective As of: 10-15-92

ITEM*	PART#.....	DESCRIPTION.....	QTY..... UM
1	901-1-1	DIE BLOCK	1 EA
2	901-1-101	COVER PLATE ASSEMBLY	2 EA
3	901-3-1	LARGE CRANK	1 EA
4	901-1-4	SMALL CRANK	1 EA
5	901-2-14	SLIDE	2 EA
6	10/0197	WASHER,BOW,SS	3 EA
7	901-3-7	WASHER STEEL	3 EA
8	901-3-2	ECCENTRIC BUSHING .015	1 EA
9	801-1-12	CRANK PIN	2 EA
10	901-1-5	SCREW,ADJ	1 EA
11	TACAN0832018	SET.A.CU.STL.	AR EA
12	TACAN0440018	SET.A.CU.STL.	AR EA
13	SACAN0632050	SCREW,ALLEN,CAP	AR EA
14	L0001	BUSHING 02DU03	4 EA
15	L0503	BUSHING 06DU10	1 EA
16	L0601	BUSHING 07DU08	1 EA
17	901-3-9L	COMPONENT EJECTOR, LEFT	1 EA
18	901-3-9R	COMPONENT EJECTOR, RIGHT	1 EA
19	901-3-10L	COMPONENT EJECTOR, LEFT	1 EA
20	901-3-10R	COMPONENT EJECTOR, RIGHT	1 EA
21	NSIA3118	NUT, NYLON INSERT_5/16-18	1 EA
22	SACSN0440025	SCREW,ALLEN,CAP	4 EA
23	WFRAA004	WASHER,FLAT,RG.#4	4 EA
N.S.	801-1-20	SCR,WASH FACE TH'B	1 EA

N.S. - Not Shown

N.S.S. - Not Sold Separately



GPD

Die Block Station #2 No. 901-1-102



10-30-92 Bill of Material for Assembly 901-3-101
 TRANSFER BELT ASSEMBLY-LARGE STUD SIZE

Effective As of: 10-15-92

ITEM*	PART#.....	DESCRIPTION.....	QTY.....	UM
1	N.S.S.	BELT,TIMING,ANTI-STATIC	1	EA
2	901-3-3	BRASS PIN	14	EA
3	SABAN0256012	SCREW,ALLEN,BUTTON	AR	EA

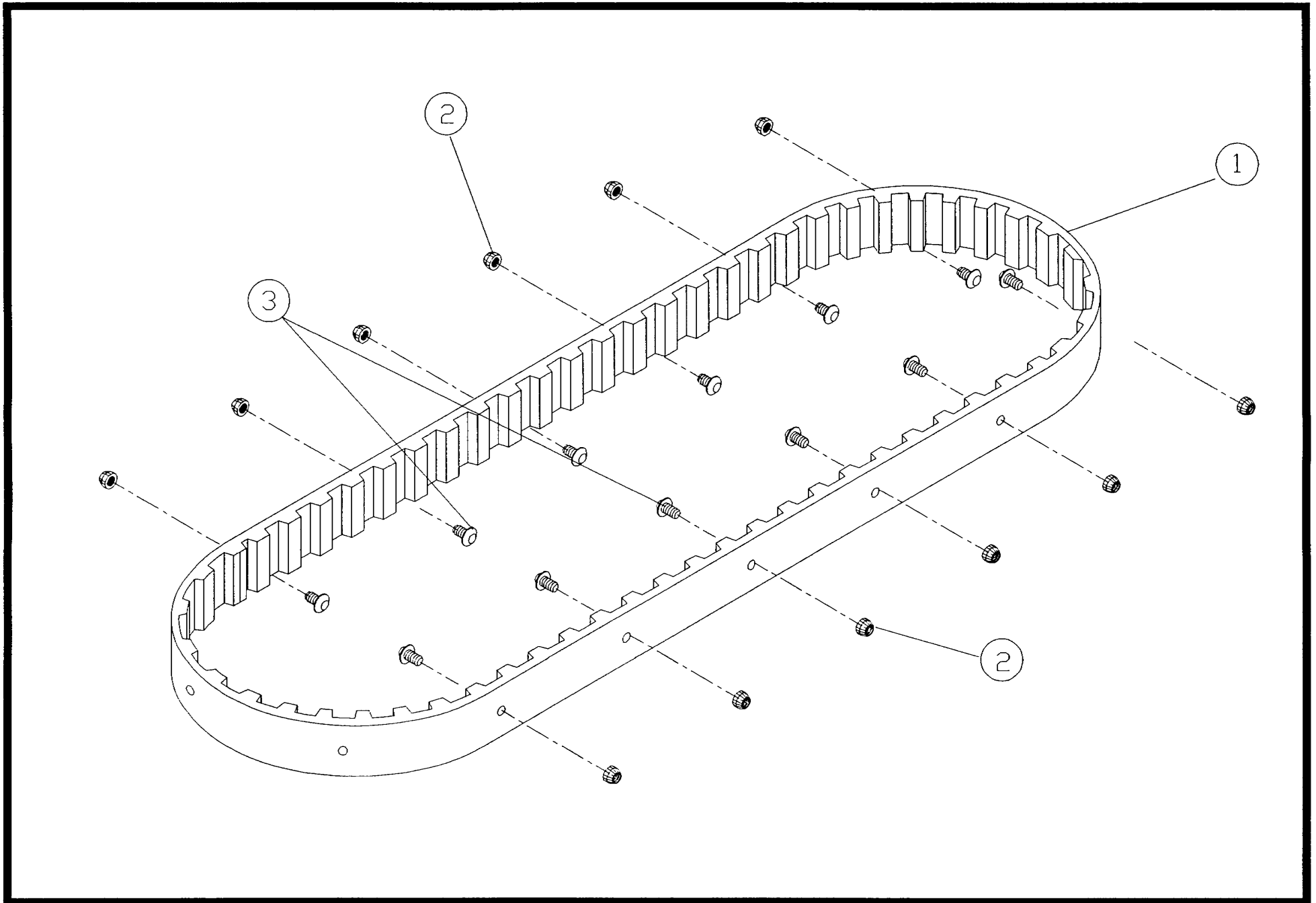
07-15-96 Bill of Material for Assembly 901-3-102
 TRANSFER BELT ASSEMBLY-SMALL STUD SIZE

Effective As of: 07-15-96

ITEM*	PART#.....	DESCRIPTION.....	QTY.....	UM
1	N.S.S.	BELT,TIMING,ANTI-STATIC	1	EA
2	901-3-13	BRASS PIN	14	EA
3	SABAN0256012	SCREW,ALLEN,BUTTON	AR	EA

N.S. - Not Shown

N.S.S. - Not Sold Separately



GPD

Transfer Belt Assembly No. 901-3-101, 901-3-102



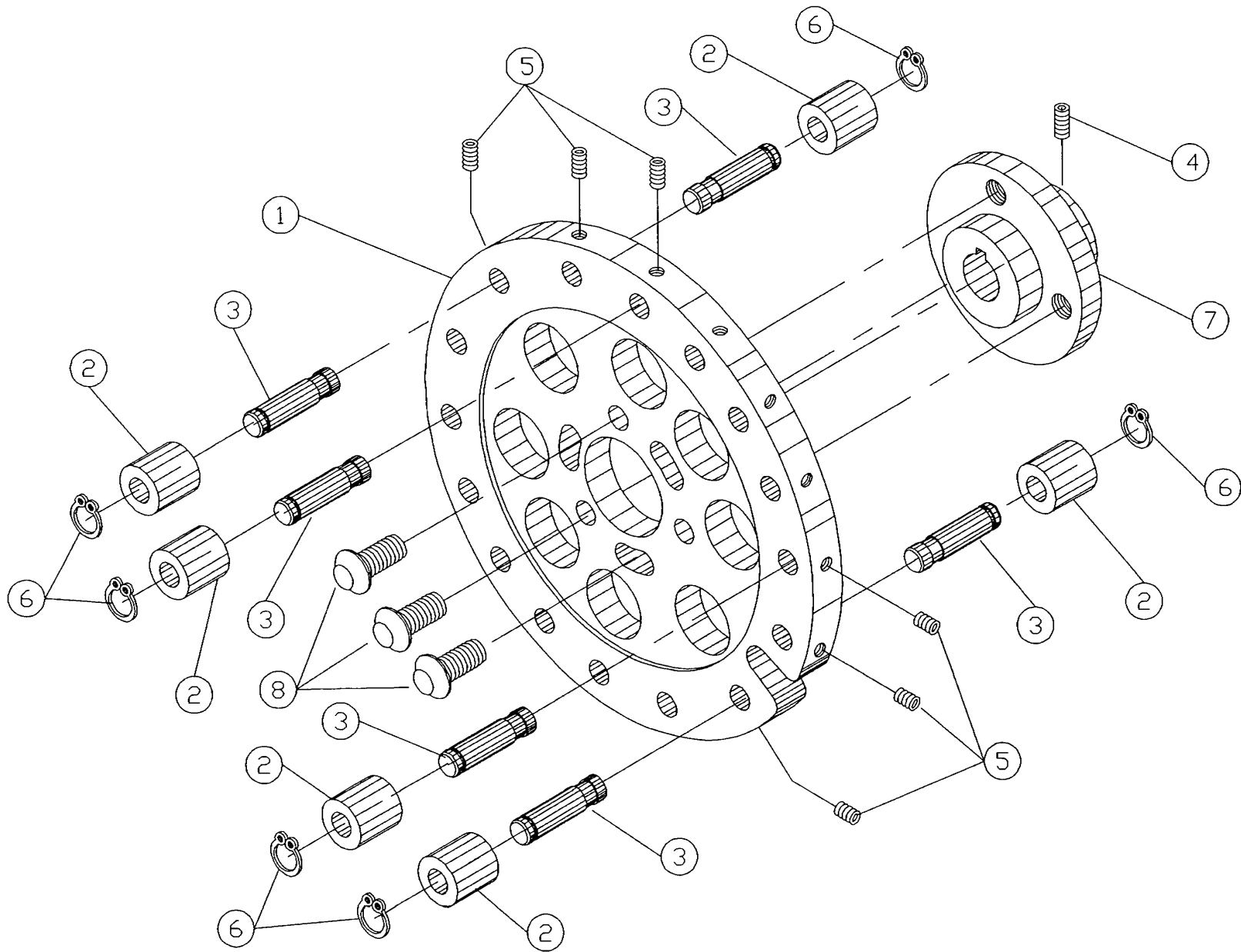
10-30-92 Bill of Material for Assembly 902-1-102
 CAM FOLLOWER ASSEMBLY

Effective As of: 10-15-92

ITEM*	PART#.....	DESCRIPTION.....	QTY.....	UM
1	M.S.S.	CAM FOLLOWER	1	EA
2	806-1-3	ROLLER (CAM FOLLOWER)	16	EA
3	M.S.S.	SPIGOT (CAM FOLLOWER)	16	EA
4	TACAN0632025	SET.A.CU.STL.	AR	EA
5	TACAN0632018	SET.A.CU.STL.	AR	EA
6	G1007	RETAINING RING 5100-25	AR	EA
7	806-1-11	HUB (FOR CAM FOLLOWER)	1	EA
8	SABSN2520062	SCREW, BUTTONHEAD	3	EA

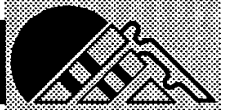
M.S. - Not Shown

M.S.S. - Not Sold Separately



GPD

Cam Follower Assembly No. 902-1-102



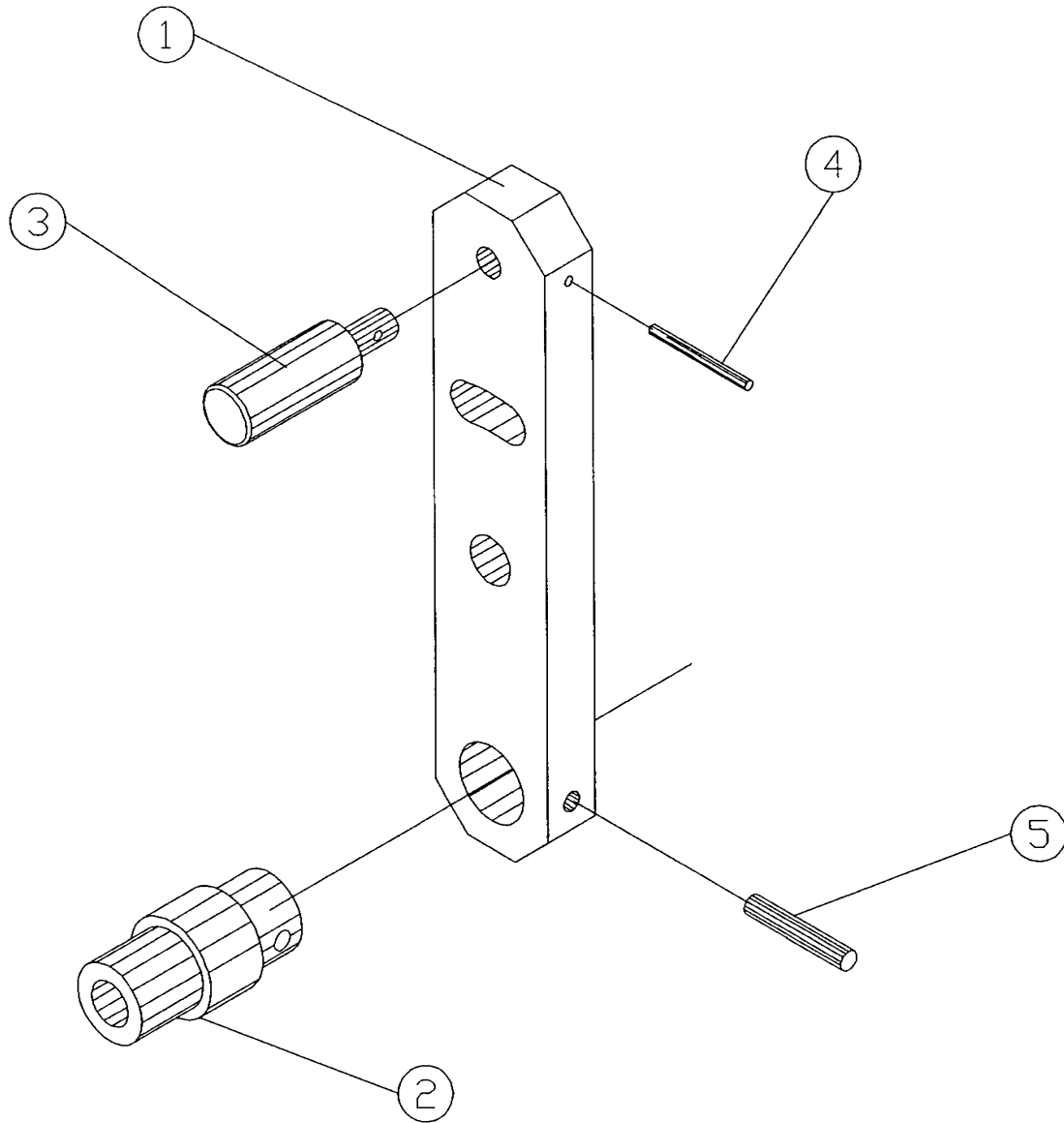
10-30-92 Bill of Material for Assembly 902-1-103
LEVER ASSEMBLY - BELT

Effective As of: 10-15-92

ITEM*	PART#.....	DESCRIPTION.....	QTY.....	UM
1	N.S.S.	LEVER	1	EA
2	N.S.S.	PIN	1	EA
3	N.S.S.	HANDLE	1	EA
4	RPAS06075	PIN, ROLL	AR	EA
5	RPAS12075	PIN, ROLL	AR	EA

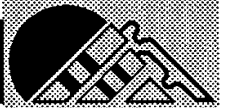
N.S. - Not Shown

N.S.S. - Not Sold Separately



GPD

Lever Assembly - Belt No. 902-1-103



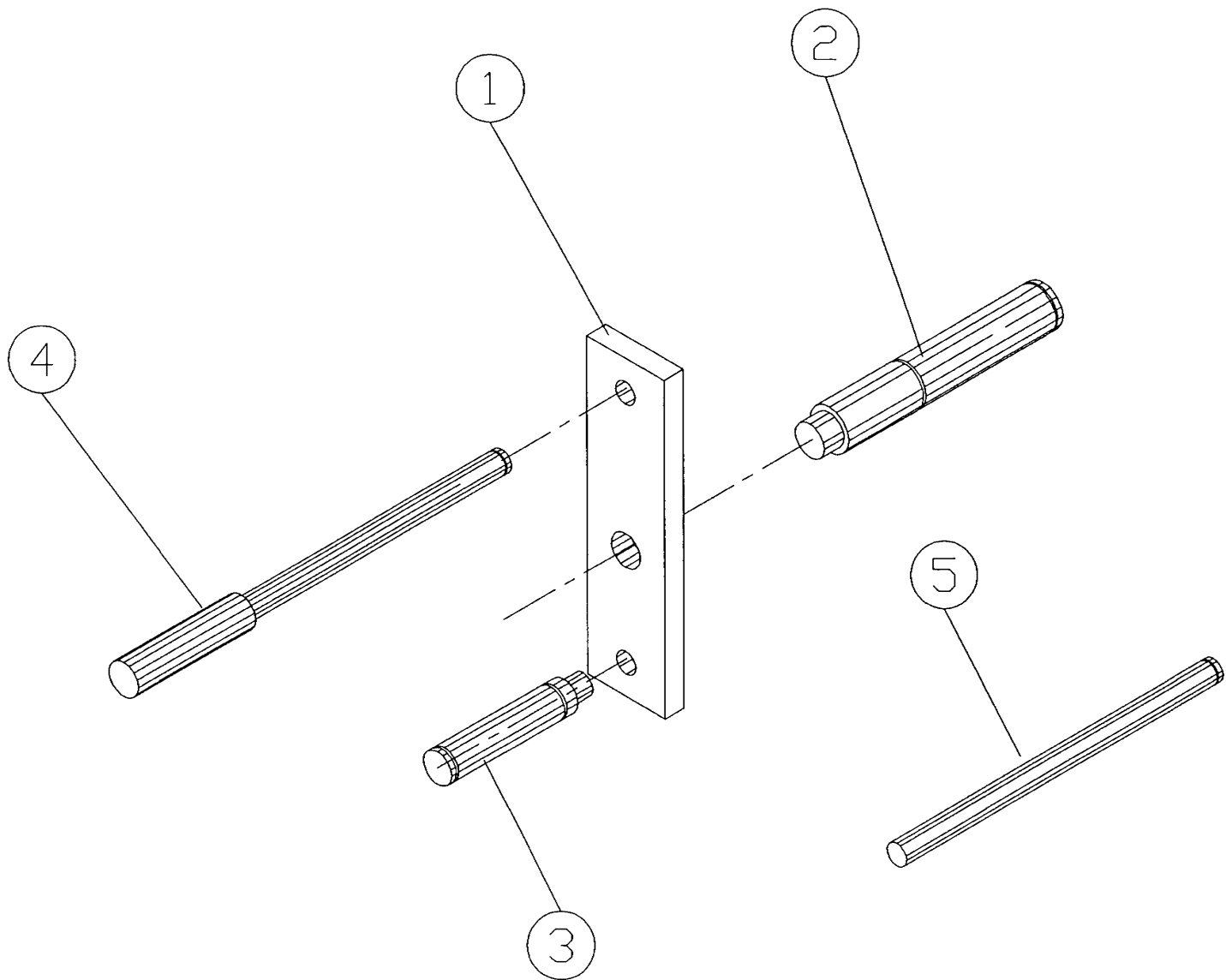
10-30-92 Bill of Material for Assembly 903-1-104
LEVER ASSEMBLY - TOP

Effective As of: 10-15-92

ITEM*	PART#.....	DESCRIPTION.....	QTY.....	UM
1	N.S.S.	LEVER	1	EA
2	N.S.S.	PIN	1	EA
3	N.S.S.	PIN	1	EA
4	N.S.S.	SPRING PIN	1	EA
5	N.S.S.	PIN	1	EA

N.S. - Not Shown

N.S.S. - Not Sold Separately



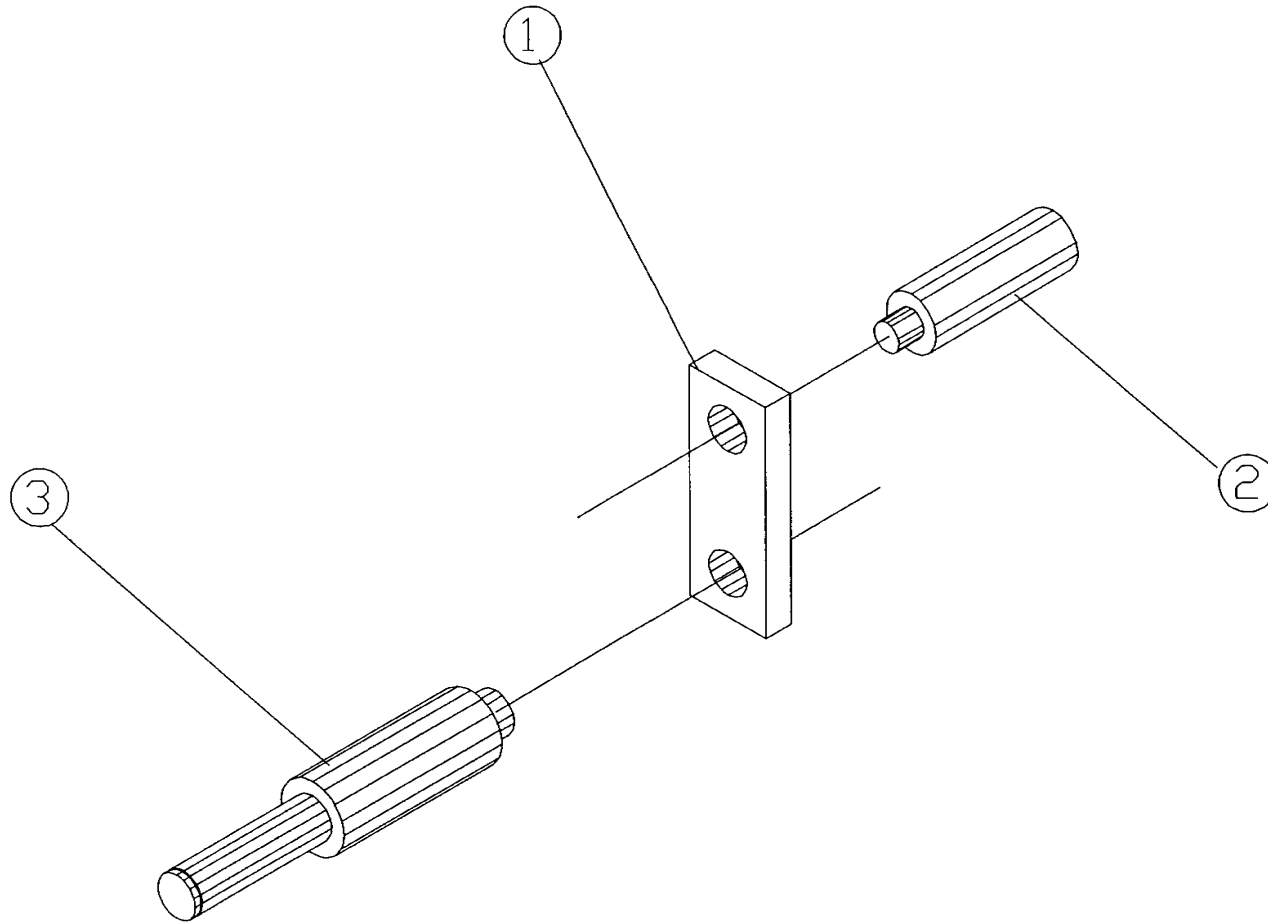
10-30-92 **Bill of Material for Assembly 903-1-105**
LEVER ASSEMBLY - BOTTOM

Effective As of: 10-15-92

ITEM*	PART#.....	DESCRIPTION.....	QTY.....	UM
1	N.S.S.	LEVER	1	EA
2	N.S.S.	PIN	1	EA
3	N.S.S.	PIN	1	EA

N.S. - Not Shown

N.S.S. - Not Sold Separately



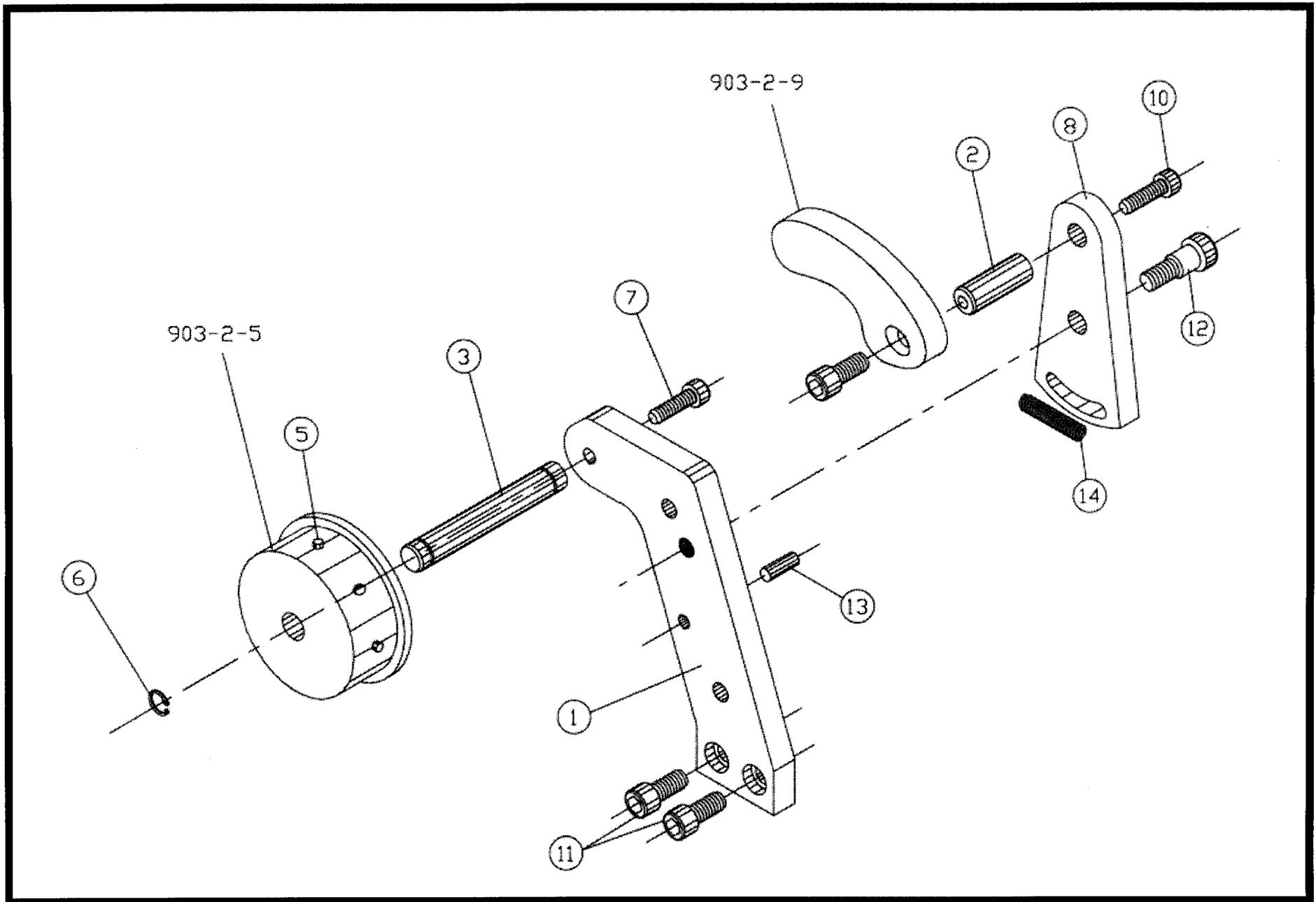
05-22-02 Bill of Material for Assembly 903-2-110
 INFEEED ARM ASSY WITH SPRING

Effective As of: 05-22-02

ITEM*	PART#.....	DESCRIPTION.....	QTY.....	UM
1	903-2-1	INFEEED ARM - LARGE	1	EA
2	903-2-2	SUPPORT PIN - SM. ROLLER	1	EA
3	N.S.			
4	N.S.			
5	G2509	PIN,DOWEL	AR	EA
6	G1013	RETAINING RING 5100-37	AR	EA
7	SACAN1032062	SCREW,ALLEN,CAP	AR	EA
8	903-2-10	INFEEED ARM - SMALL	1	EA
9	N.S.			
10	SACAN1032100	SCREW,ALLEN,CAP	AR	EA
11	SACAN2520050	SCREW,ALLEN,CAP	AR	EA
12	F4959	SHOULDER BOLT	1	EA
13	DA18050	PIN, DOWEL	AR	EA
14	S0020	COMPRESSION SPRING	1	EA
	903-2-101	ROLLER GUIDE ASSY.	1	EA

N.S. - Not Shown

N.S.S. - Not Sold Separately



GPD

Infeed Arm Assembly with Spring No. 903-2-110



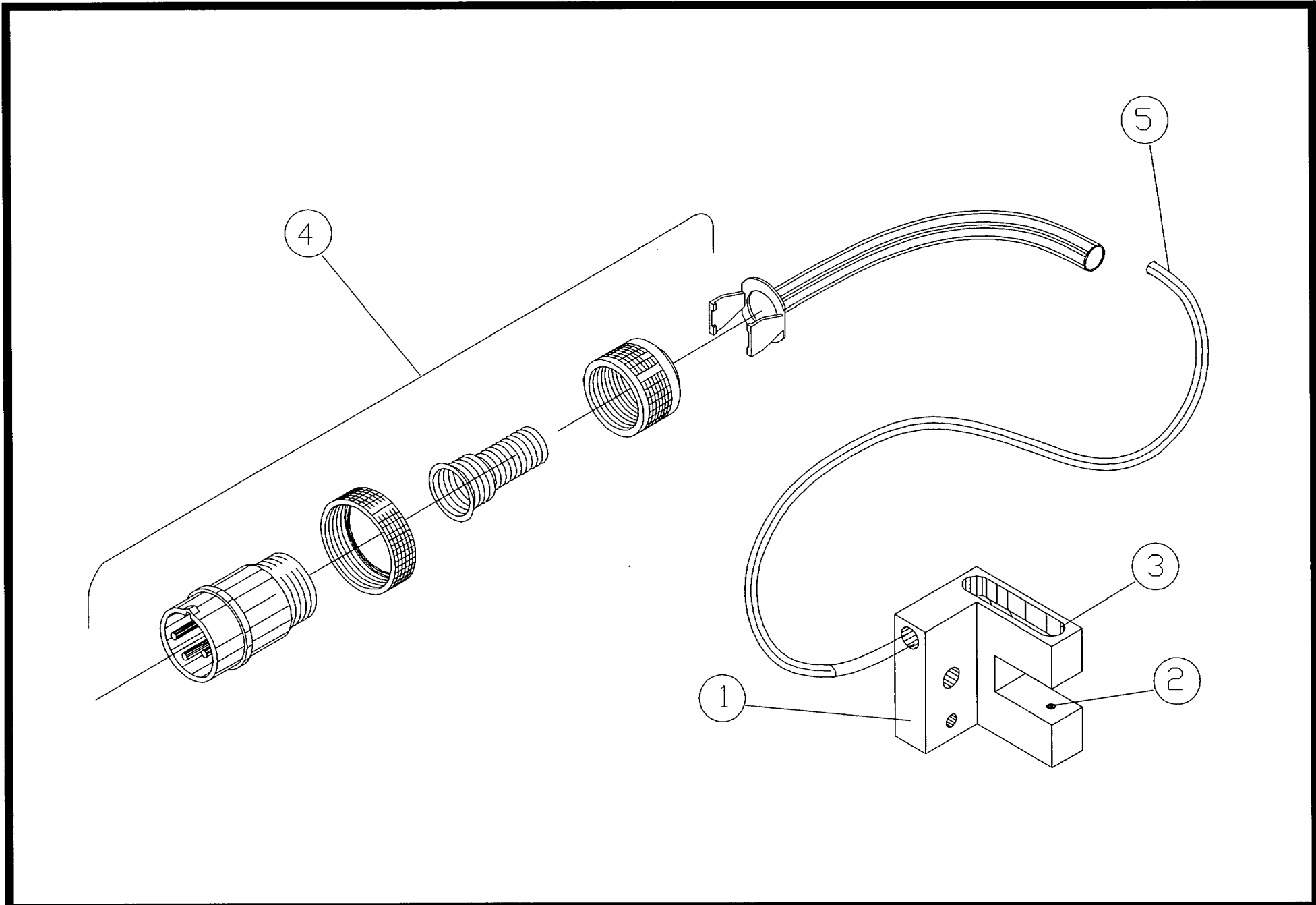
10-30-92 Bill of Material for Assembly 903-108
CF9 COUNTER BRACKET

Effective As of: 10-15-92

ITEM*	PART#.....	DESCRIPTION.....	QTY.....	UM
1	903-2-6	COUNTER BRACKET	1	EA
2	3700-0008	EMITTER IR	1	EA
3	3700-0009	DETECTOR IR	1	EA
4	2100-0053	CONNECTOR,PLUG	1	EA
5	6000-0015	COAXIAL CABLE	60	IN
N.S.	2800-0014	HARDWARE ELECTRICAL	1	EA

N.S. - Not Shown

N.S.S. - Not Sold Separately



GPD

Counter Bracket No. 903-108



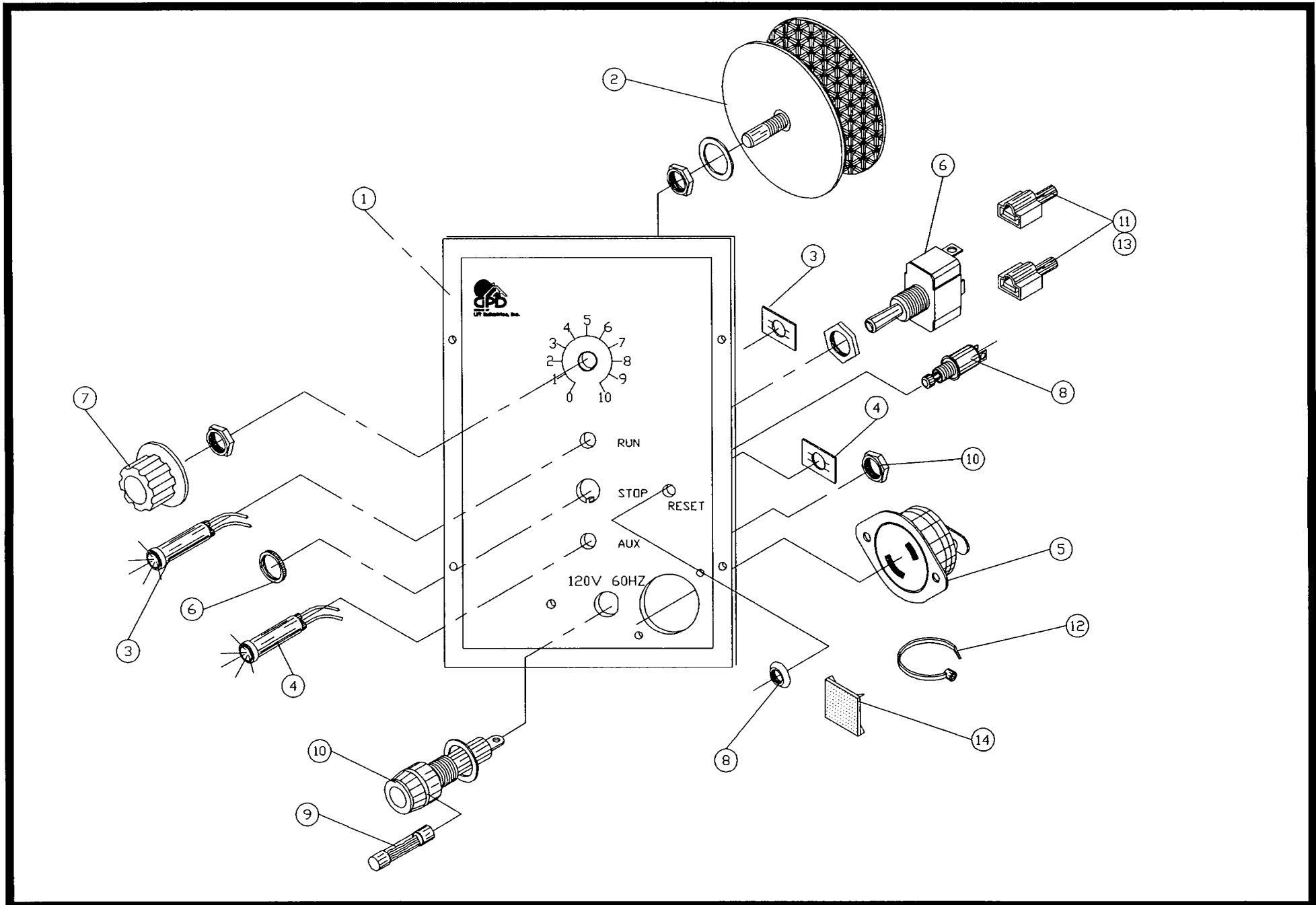
10-30-92 Bill of Material for Assembly 906-3-1
CONTROL UNIT, 120V 60Hz

Effective As of: 10-15-92

ITEM*	PART#.....	DESCRIPTION.....	QTY.....	UM
1	1400-0007	PANEL,FRONT	1	EA
2	2200-0008	SPEED CONTROL 120V 60HZ	1	EA
3	2450-0017	PILOT LIGHT 110V RED	1	EA
4	2450-0015	PILOT LIGHT 110V ORANGE	1	EA
5	2800-0007	CONNECTOR AC	1	EA
6	5100-0037	SWITCH,TOGGLE	1	EA
7	2400-0006	KNOB 1/4" SHAFT	1	EA
8	5100-0024	SWITCH,PUSH BUTTON	1	EA
9	4300-0026	FUSE,SLOW BLOW	1	EA
10	4300-0001	FUSE HOLDER,PANEL MOUNT	1	EA
11	2100-0121	CONNECTOR,TERMINAL	AR	EA
12	2800-0028	WIRE TIES	2	EA
13	2100-0124	CONNECTOR,TERMINAL	9	EA
14	2800-0029	STICK DOWN PADS 1/2"	1	EA
N.S.	6000-20-HU-BRN	WIRE, 20AWG HOOKUP/BROWN	AR	IN
N.S.	6000-20-HU-RED	WIRE, 20AWG HOOKUP/RED	AR	IN
N.S.	6000-20-HU-BLU	WIRE, 20AWG HOOKUP/BLU	AR	IN
N.S.	6000-20-HU-WHT	WIRE, 20AWG HOOKUP/WHITE	AR	IN
N.S.	6000-20-HU-BLK	WIRE, 20AWG HOOKUP/BLACK	AR	IN

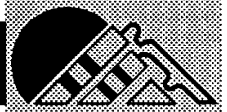
N.S. - Not Shown

N.S.S. - Not Sold Separately



GPD

Control Unit, 120V 60Hz No. 906-3-1



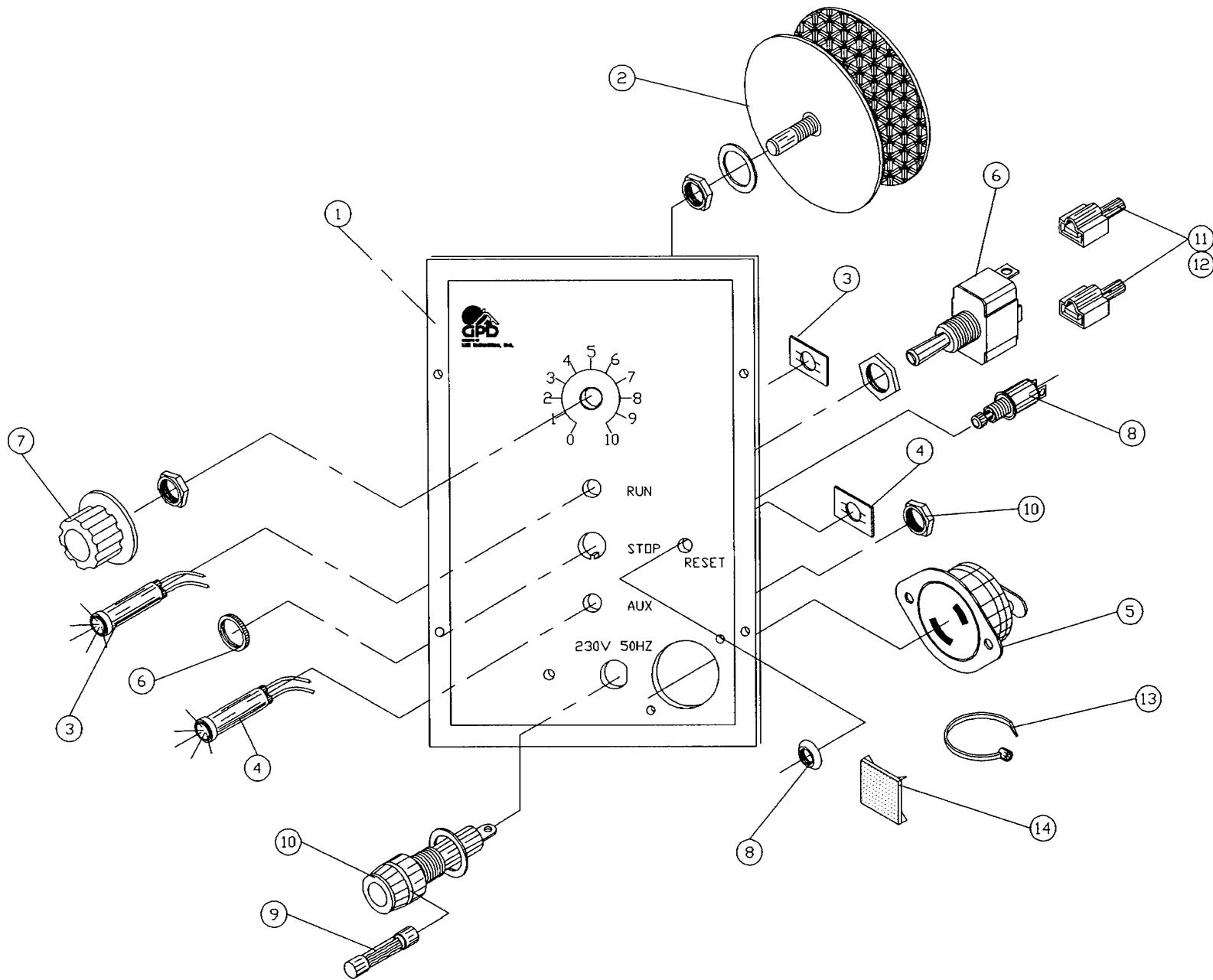
10-30-92 Bill of Material for Assembly 906-3-2
CONTROL UNIT, 230V 50/60Hz

Effective As of: 10-15-92

ITEM*	PART#.....	DESCRIPTION.....	QTY.....	UM
1	1400-0007	PANEL,FRONT	1	EA
2	2200-0014	SPEED CONTROL 230V 50HZ	1	EA
3	2450-0018	RED INDICATOR	1	EA
4	2450-0016	AMBER INDICATOR	1	EA
5	2800-0007	CONNECTOR AC	1	EA
6	5100-0037	SWITCH,TOGGLE	1	EA
7	2400-0006	KNOB 1/4" SHAFT	1	EA
8	5100-0024	SWITCH,PUSH BUTTON	1	EA
9	4300-0025	FUSE,SLOW BLOW	1	EA
10	4300-0001	FUSE HOLDER,PANEL MOUNT	1	EA
11	2100-0121	CONNECTOR,TERMINAL	AR	EA
12	2100-0124	CONNECTOR,TERMINAL	9	EA
13	2800-0028	WIRE TIES	2	EA
14	2800-0029	STICK DOWN PADS 1/2"	1	EA
N.S.	6000-20-HU-BRN	WIRE, 20AWG HOOKUP/BROWN	AR	IN
N.S.	6000-20-HU-RED	WIRE, 20AWG HOOKUP/RED	AR	IN
N.S.	6000-20-HU-BLU	WIRE, 20AWG HOOKUP/BLU	AR	IN
N.S.	6000-20-HU-WHT	WIRE, 20AWG HOOKUP/WHITE	AR	IN
N.S.	6000-20-HU-BLK	WIRE, 20AWG HOOKUP/BLACK	AR	IN

N.S. - Not Shown

N.S.S. - Not Sold Separately



GPD

Control Unit, 230V 50/60Hz No. 906-3-2



10-30-92 **Bill of Material for Assembly 925-1-2**
SPARE PARTS KIT, 120V

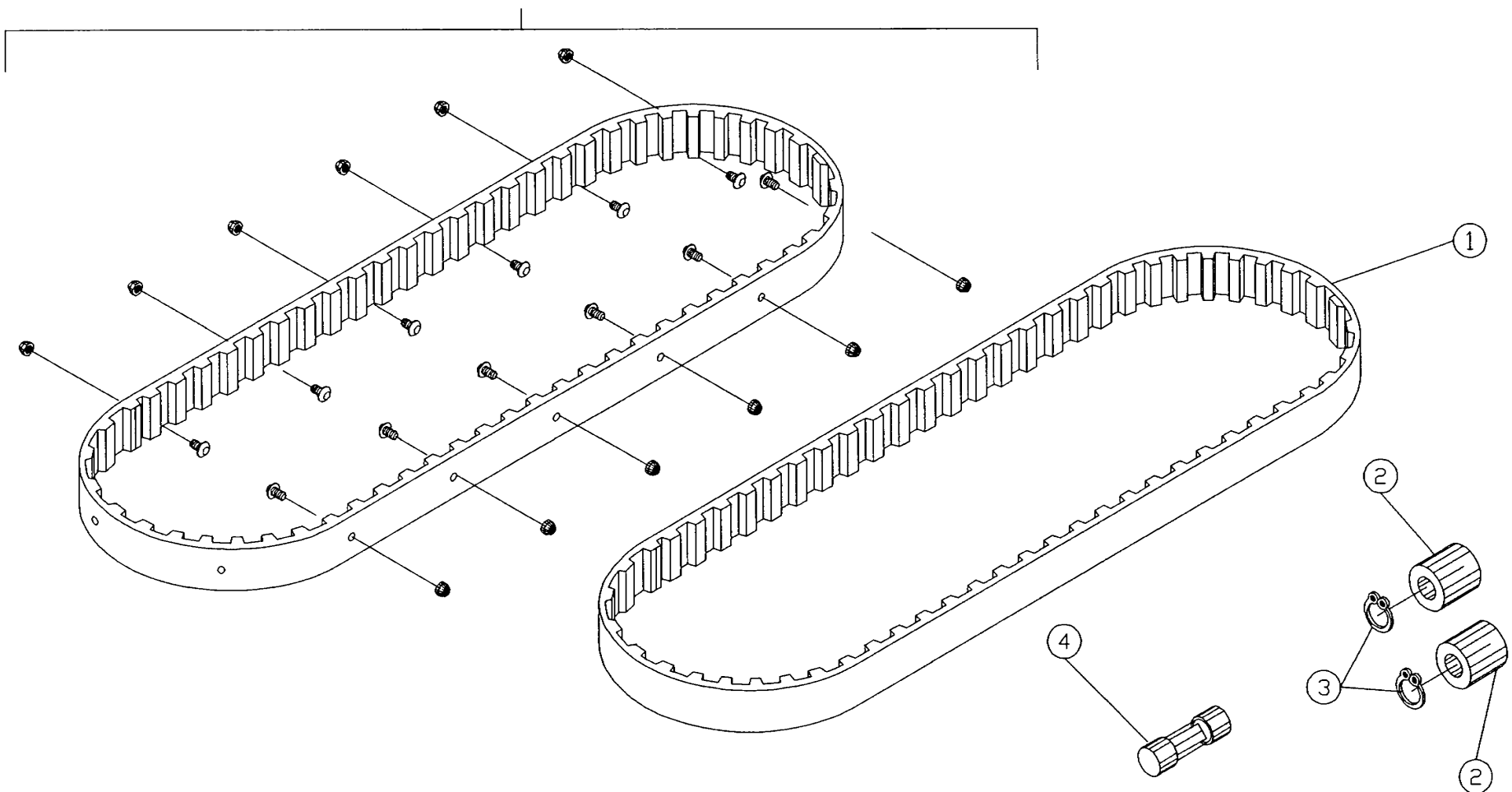
Effective As of: 10-15-92

ITEM*	PART#.....	DESCRIPTION.....	QTY.....	UM
1	D0001	MOTOR BELT	1	EA
2	806-1-3	ROLLER (CAM FOLLOWER)	16	EA
3	G1007	RETAINING RING 5100-25	16	EA
4	4300-0026	FUSE,SLOW BLOW	1	EA
	901-3-101	TRANSFER BELT ASSEMBLY	1	EA

N.S. - Not Shown

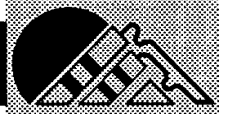
N.S.S. - Not Sold Separately

ASSY
901-3-101



GPD

Spare Parts Kit, 120V No. 925-1-2



10-30-92 **Bill of Material for Assembly 925-1-3**
SPARE PARTS KIT, 230V

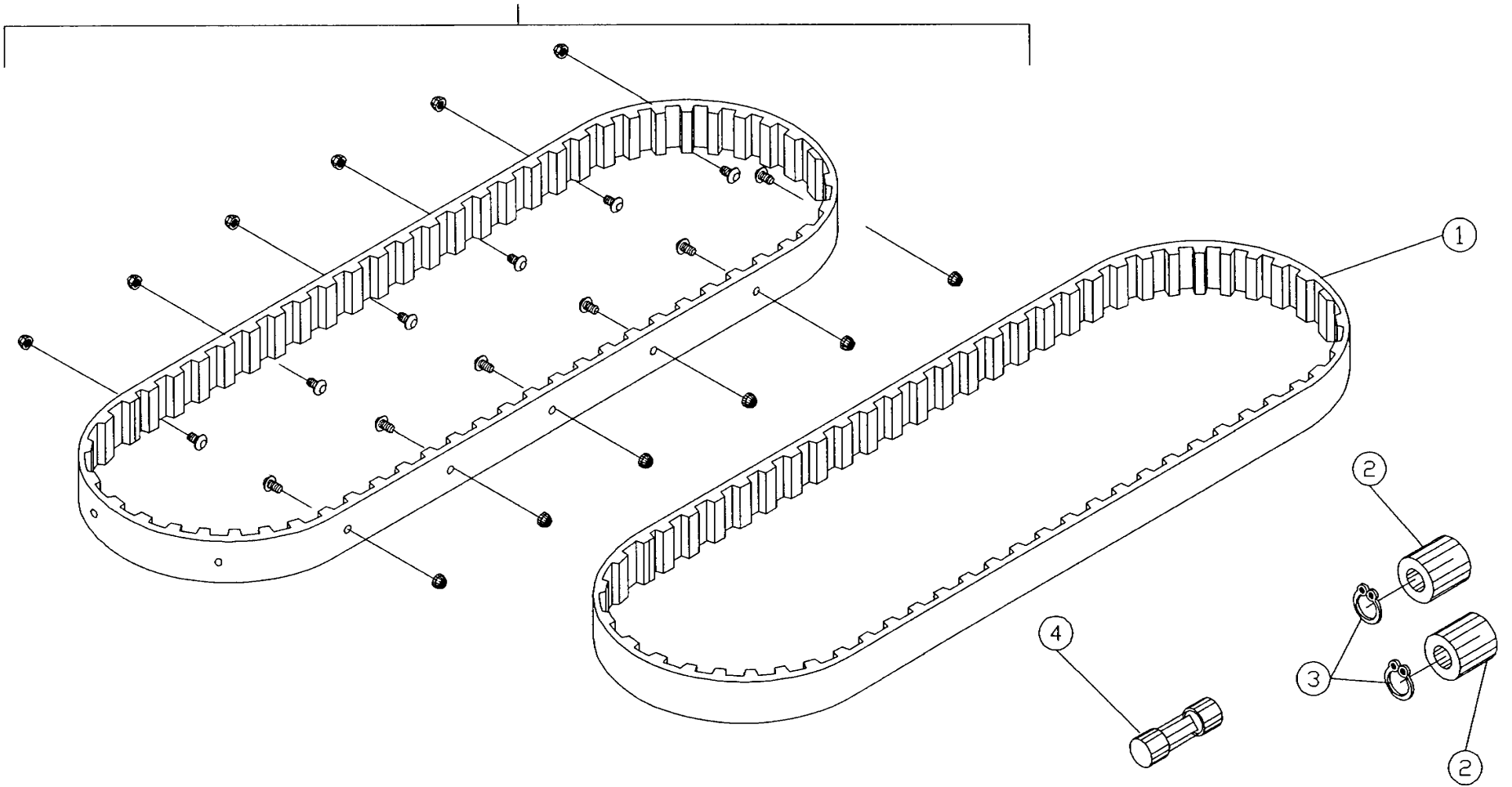
Effective As of: 10-15-92

ITEM*	PART#.....	DESCRIPTION.....	QTY.....	UM
1	D0001	MOTOR BELT	1	EA
2	806-1-3	ROLLER (CAM FOLLOWER)	16	EA
3	G1007	RETAINING RING 5100-25	16	EA
4	4300-0025	FUSE,SLOW BLOW	1	EA
	901-3-101	BELT ASSEMBLY	1	EA

N.S. - Not Shown

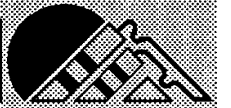
N.S.S. - Not Sold Separately

ASSY
901-3-101



GPD

Spare Parts Kit, 230V No. 925-1-3



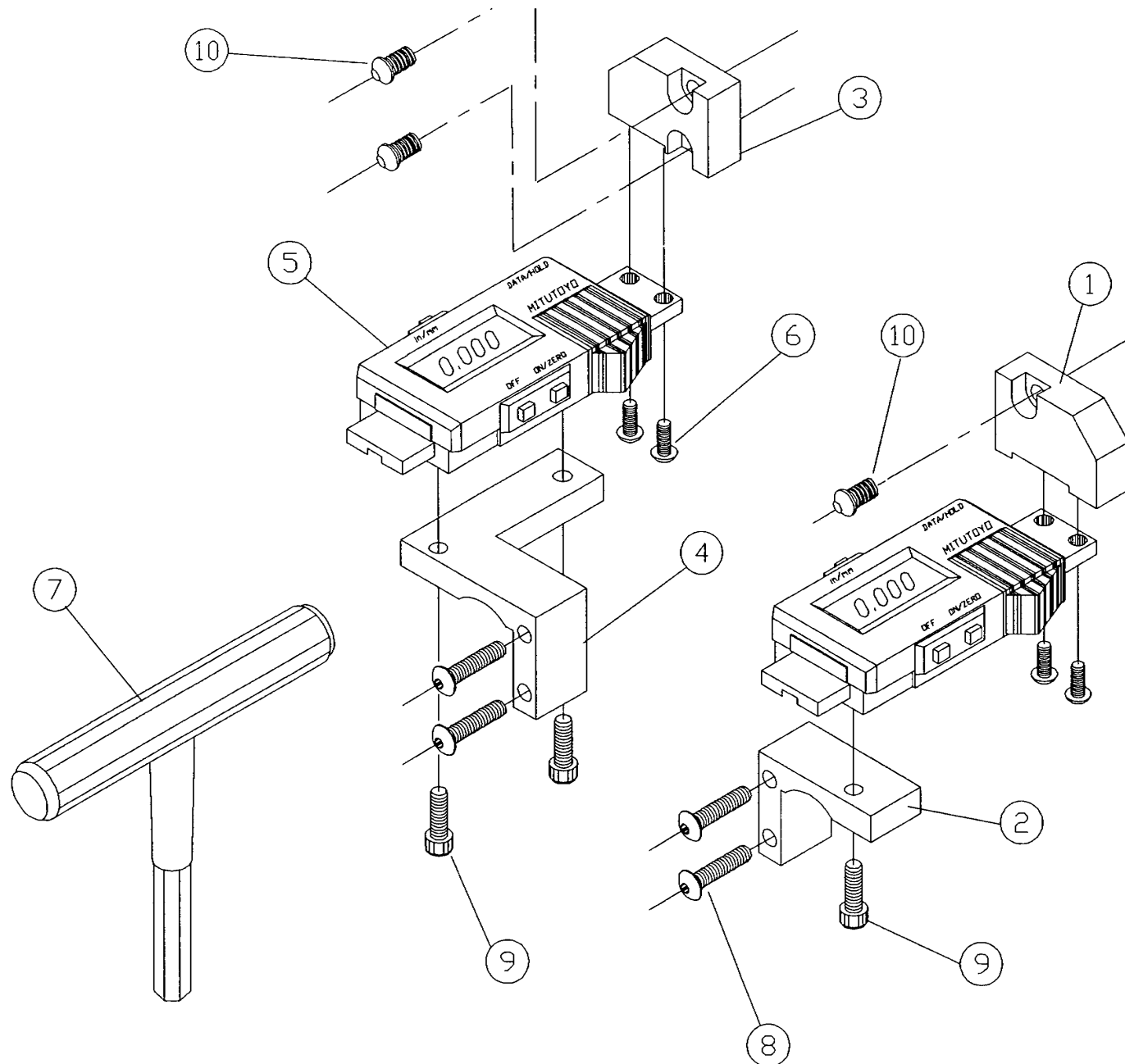
10-30-92 Bill of Material for Assembly 925-111
CF9 MICROMETER ADJUSTMENT PACKAGE

Effective As of: 10-15-92

ITEM*	PART#.....	DESCRIPTION.....	QTY.....	UM
1	925-1-7	SCALE MOUNT	1	EA
2	925-1-8	SCALE MOUNT	1	EA
3	925-1-9	SCALE MOUNT	1	EA
4	925-1-10	SCALE MOUNT	1	EA
5	925-1-4	SCALE MODIFIED WITH LCD	2	EA
6	SABAN0632025	SCREW,ALLEN,BUTTON	2	EA
7	813-1-15	WRENCH 1/4 "T"	1	EA
8	SACAN0632100	SCREW,ALLEN,CAP	4	EA
9	SACAN0440037	SCREW,ALLEN,CAP	1	EA
10	SACAN0632050	SCREW,ALLEN,BUTTON	3	EA

N.S. - Not Shown

N.S.S. - Not Sold Separately



GPD

Micrometer Adjustment Package No. 925-111



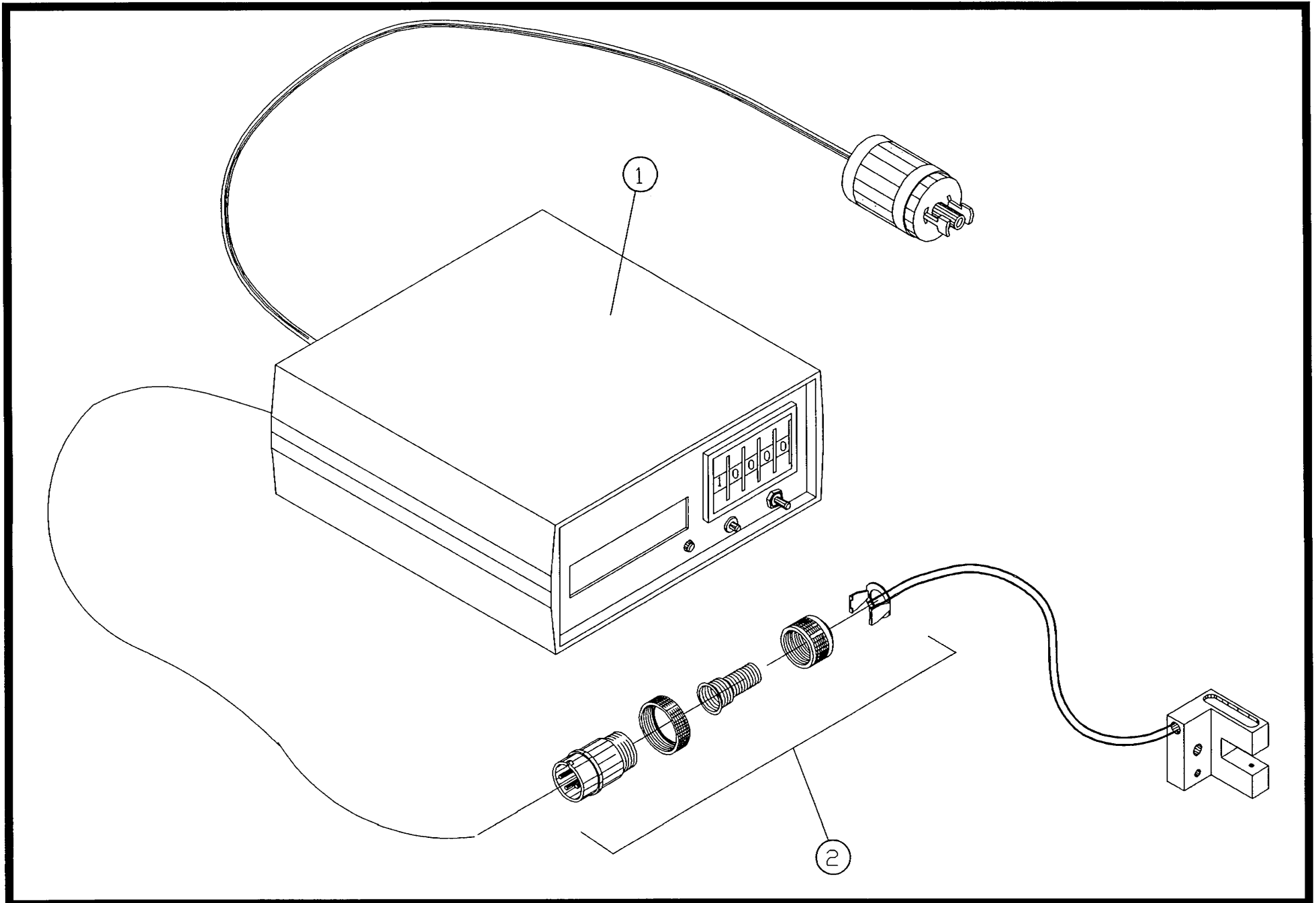
10-30-92 **Bill of Material for Assembly 925-112**
CF9 COUNTER PACKAGE, 120 VOLT

Effective As of: 10-15-92

ITEM*	PART#.....	DESCRIPTION.....	QTY.....	UM
1	CC789-1	PRESET COUNTER-120V	1	EA
2	903-108	CF9 COUNTER BRACKET	1	EA

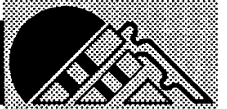
N.S. - Not Shown

N.S.S. - Not Sold Separately



GPD

Counter Package 120V No. 925-112



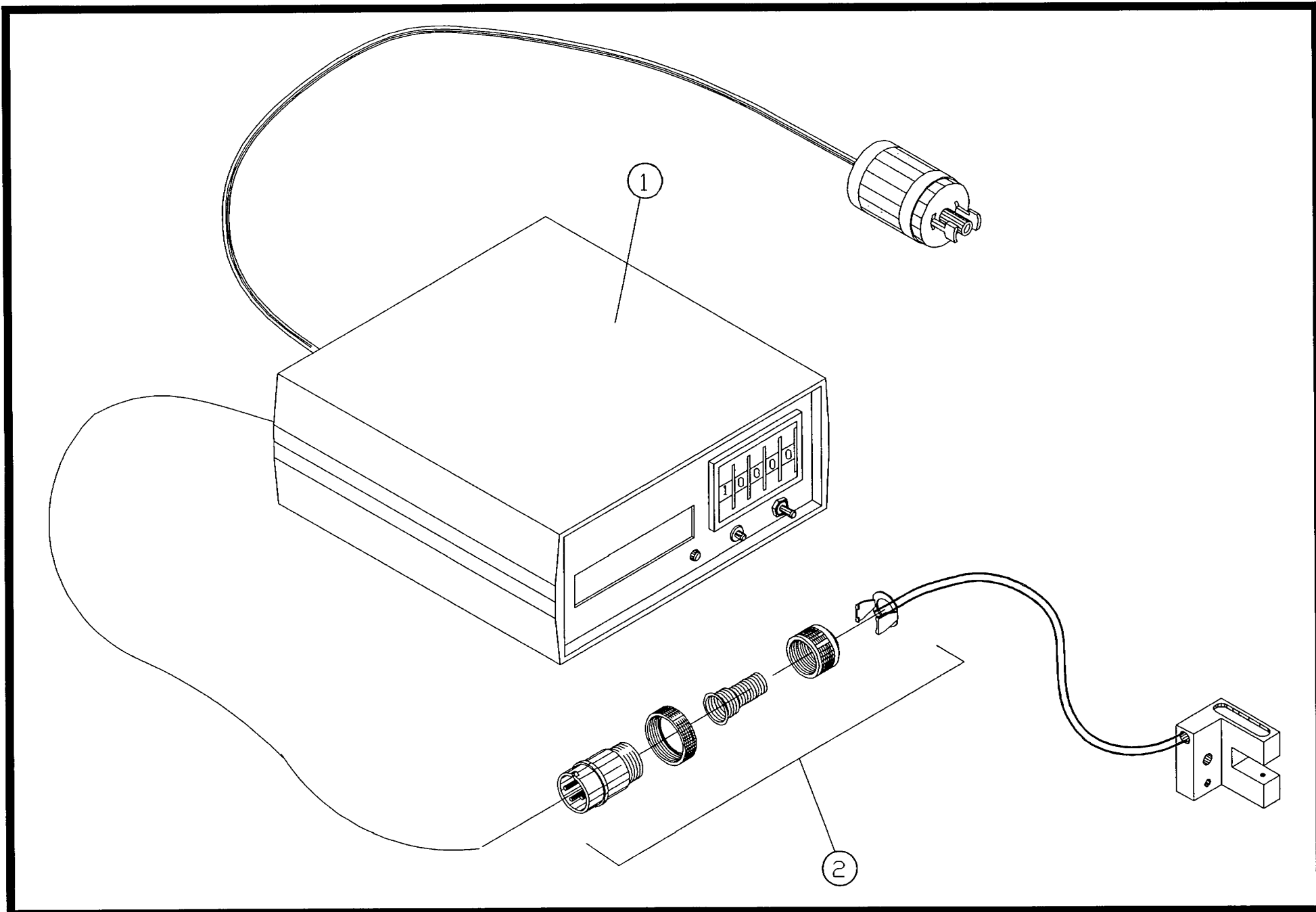
10-30-92 **Bill of Material for Assembly 925-113**
CF9 COUNTER PACKAGE, 230V

Effective As of: 10-15-92

ITEM*	PART#.....	DESCRIPTION.....	QTY.....	UM
1	CC789-2	PRESET COUNTER-230V	1	EA
2	903-108	CF9 COUNTER BRACKET	1	EA

N.S. - Not Shown

N.S.S. - Not Sold Separately



GPD

Counter Package 230V No. 925-113

